

## First Release

Year: LX.

Zagreb, 30 November 2023

IND-2023-6-1

ISSN 1334-0557

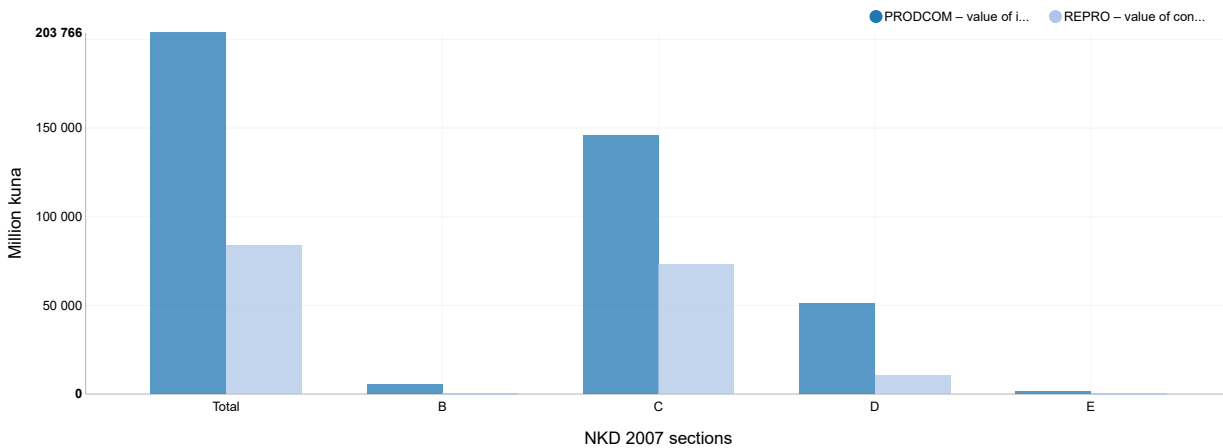


# RAW MATERIALS INPUTS IN INDUSTRIAL PRODUCTION, 2022 – Provisional Data

In 2022, the total value of consumed raw materials and consumables used as inputs in the industrial production process in enterprises engaged in industrial production in the Republic of Croatia amounted to 83 664 million kuna according to the coverage of the Annual Survey on Raw Material Consumption in Industry for 2022. According to the results of the PRODCOM Survey on Industrial Production in 2022<sup>1)</sup>, as compared to the total value of industrial products sold (output), out of the total of 203 766 million kuna generated by the same enterprises, the value of raw materials and consumables used as inputs in that industrial production had a share of 41.1% in the output value of industry. In other words, the total value of industrial products sold generated by enterprises in 2022 was higher by 120 102 million kuna (58.9%) than the expenditure for consumed raw materials and consumables used as input in that production, according to a rough input-output balance calculation.

1) See the Commentary and the Notes on Methodology in the First Release IND-2023-5-2 Production and Sale of Industrial Products (PRODCOM), 2022.

## G-1 COMPARISON OF VALUES OF CONSUMED RAW MATERIALS AND CONSUMABLES AS INPUTS AND INDUSTRIAL PRODUCTS SOLD, 2022



According to the industrial sections of the NKD 2007, the highest value of consumed raw materials and consumables used as inputs in the industrial production in 2022 was recorded in section C Manufacturing, 72 950 million kuna, followed by section D Electricity, gas, steam and air conditioning supply, 10 463 million kuna, and section B Mining and quarrying, 227 million kuna, while the lowest value was recorded in section E Water supply; sewerage, waste management and remediation activities, 10 million kuna.

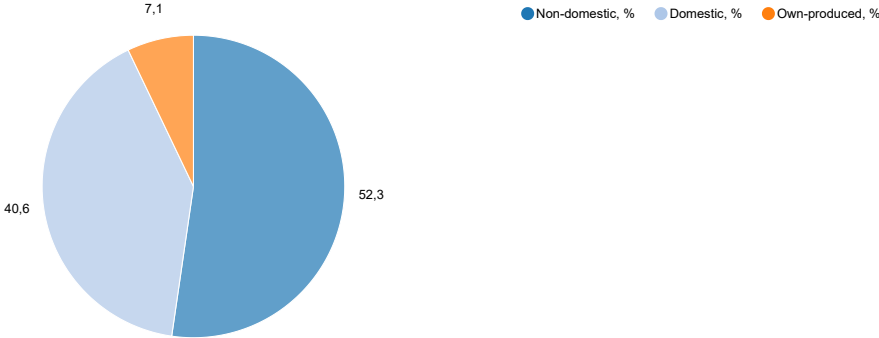
Comparing the consumption by the NKD 2007 industrial divisions (05 – 36), the highest value of consumed raw materials and consumables was generated in division 10 Manufacture of food products (14 817 million kuna) and in division 19 Manufacture of coke and refined petroleum products (14 581 million kuna), while the lowest value of consumed raw materials was generated in division 36 Water collection, treatment and supply (8 million kuna).

The analysis of the value of raw materials and consumables used as inputs in the industrial production in 2022 by origin of raw materials and consumables showed that there were 7.1% (5 913 million kuna) of raw materials and consumables consumed from own-production, while 92.9% (77 751 million kuna) was purchased on the market from third parties, out of which 40.6% (33 962 million kuna) was purchased on domestic market and 52.3% (43 788 million kuna) on non-domestic market (import).

The greatest value of consumption of raw materials and consumables in the Republic of Croatia in 2022 was recorded in the County of Primorje-Gorski kotar, 17 136 million kuna, and in the City of Zagreb, 16 020 million kuna. The lowest value of consumption of raw materials and consumables for industrial production purposes in 2022 was generated in the County of Dubrovnik-Neretva, 122 million kuna, and in the County of Lika-Senj, 253 million kuna.

Data on the value of consumed raw materials and consumables for purposes of the industrial production in 2022 were compiled by the processing of the Annual Survey on Raw Materials and Energy Consumption in Industry for 2022 (IND-21/REPRO form), which covered 2 931 industrial local units belonging to legal entities and tradesmen employing 10 and more persons. It should be noted in particular that the REPRO Survey for 2022 had exactly the same coverage as the already mentioned Annual PRODCOM Survey on Industrial Production for 2022 in order to achieve the comparability and consistency of data for the input-output analysis at the level of products/raw materials.

G-2 STRUCTURE OF VALUE OF CONSUMED RAW MATERIALS AND CONSUMABLES, BY ORIGIN, 2022

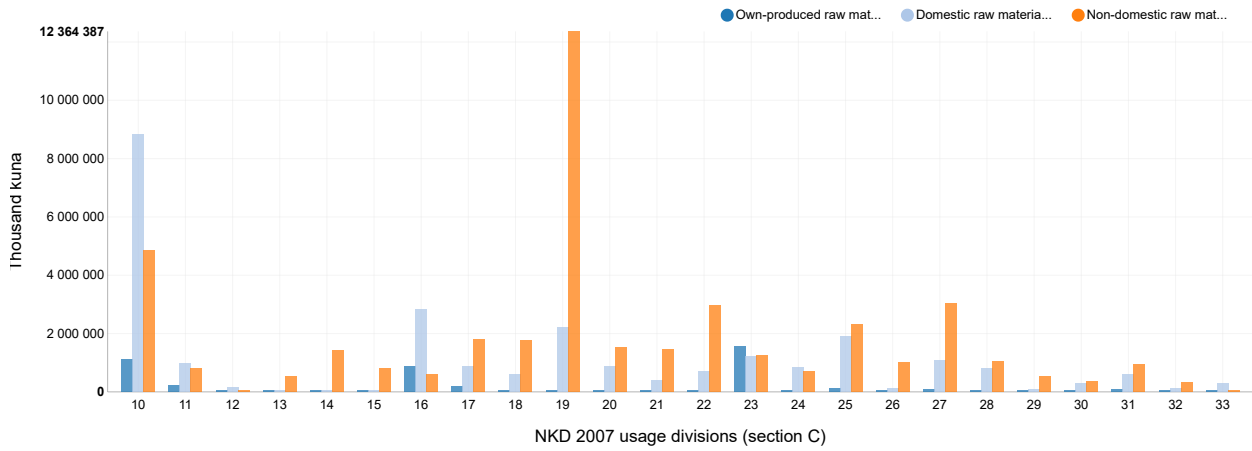


1 VALUE OF CONSUMED RAW MATERIALS AND CONSUMABLES FOR INDUSTRIAL PRODUCTION PURPOSES,  
ACCORDING TO USAGE IN INDUSTRIAL NKD 2007 SECTIONS AND DIVISIONS, 2022

Thousand kuna

	Value of consumed raw materials and consumables, according to NRMI 2016				
	Total	Own-produced raw materials	Purchased on markets from third parties		
			Total on market	On domestic markets	On non-domestic markets
Republic of Croatia	83 663 719	5 913 201	77 750 518	33 962 113	43 788 405
B Mining and quarrying	241 260	134 656	106 604	106 307	297
08 Other mining and quarrying	230 757	130 956	99 801	99 504	297
09 Mining support service activities	10 503	3 700	6 803	6 803	-
C Manufacturing	72 949 833	4 491 434	68 458 399	25 942 647	42 515 752
10 Manufacture of food products	14 816 547	1 127 726	13 688 821	8 846 515	4 842 306
11 Manufacture of beverages	1 972 919	212 407	1 760 512	968 448	792 064
12 Manufacture of tobacco products	152 213	-	152 213	145 929	6 284
13 Manufacture of textiles	590 193	8 251	581 942	46 644	535 298
14 Manufacture of wearing apparel	1 512 908	22 436	1 490 472	66 403	1 424 069
15 Manufacture of leather and related products	844 263	22	844 241	37 544	806 697
16 Manufacture of wood and of products of wood and cork, except furniture; manufacture of articles of straw and plaiting materials	4 329 367	889 414	3 439 953	2 827 989	611 964
17 Manufacture of paper and paper products	2 847 250	171 505	2 675 745	867 768	1 807 977
18 Printing and reproduction of recorded media	2 399 270	32 078	2 367 192	605 520	1 761 672
19 Manufacture of coke and refined petroleum products	14 580 794	-	14 580 794	2 216 407	12 364 387
20 Manufacture of chemicals and chemical products	2 459 258	63 383	2 395 875	878 590	1 517 285
21 Manufacture of basic pharmaceutical products and pharmaceutical preparations	1 887 619	28 221	1 859 398	405 379	1 454 019
22 Manufacture of rubber and plastic products	3 714 687	26 428	3 688 259	715 353	2 972 906
23 Manufacture of other non-metallic mineral products	4 028 533	1 576 761	2 451 772	1 211 183	1 240 589
24 Manufacture of basic metals	1 607 460	41 616	1 565 844	845 772	720 072
25 Manufacture of fabricated metal products, except machinery and equipment	4 327 004	118 743	4 208 261	1 892 115	2 316 146
26 Manufacture of computer, electronic and optical products	1 125 117	584	1 124 533	116 188	1 008 345
27 Manufacture of electrical equipment	4 216 287	80 823	4 135 464	1 089 225	3 046 239
28 Manufacture of machinery and equipment n. e. c.	1 869 322	-	1 869 322	807 465	1 061 857
29 Manufacture of motor vehicles, trailers and semi-trailers	624 402	-	624 402	83 152	541 250
30 Manufacture of other transport equipment	650 050	-	650 050	281 429	368 621
31 Manufacture of furniture	1 603 383	68 807	1 534 576	585 872	948 704
32 Other manufacturing	486 822	22 229	464 593	126 538	338 055
33 Repair and installation of machinery and equipment	304 165	-	304 165	275 219	28 946
D Electricity, gas, steam and air conditioning supply	10 462 806	1 287 111	9 175 695	7 904 472	1 271 223
35 Electricity, gas, steam and air conditioning supply	10 462 806	1 287 111	9 175 695	7 904 472	1 271 223
E Water supply; sewerage, waste management and remediation activities (division 36 only)	9 820	-	9 820	8 687	1 133
36 Water collection, treatment and supply	9 820	-	9 820	8 687	1 133

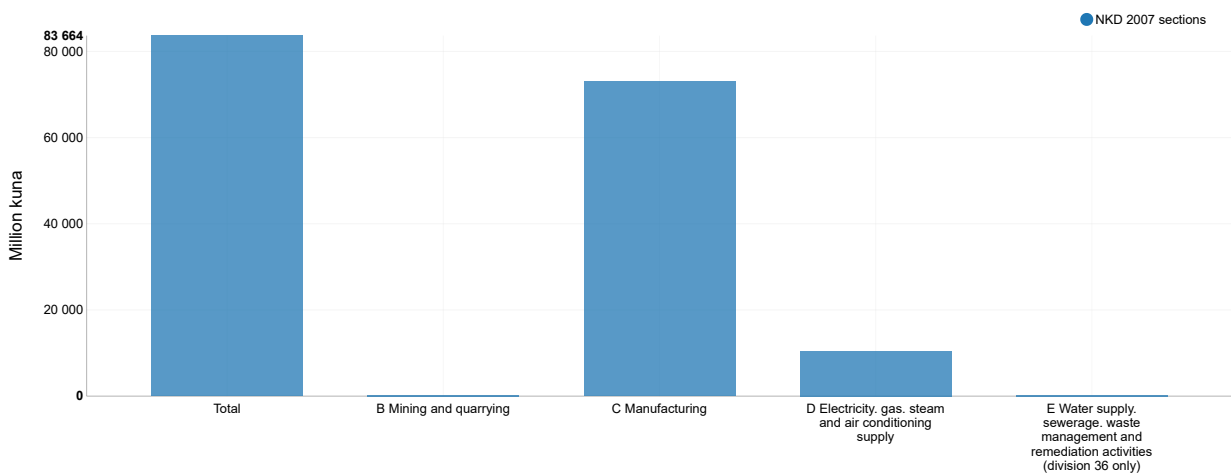
**G-3 VALUE OF CONSUMED RAW MATERIALS AND CONSUMABLES, ACCORDING TO NKD 2007 USAGE DIVISIONS (C SECTION) AND BY ORIGIN, 2022**



**Section C Manufacturing**

- 10 Manufacture of food products
- 11 Manufacture of beverages
- 12 Manufacture of tobacco products
- 13 Manufacture of textiles
- 14 Manufacture of wearing apparel
- 15 Manufacture of leather and related products
- 16 Manufacture of wood and of products of wood and cork, except furniture;  
manufacture of articles of straw and plaiting materials
- 17 Manufacture of paper and paper products
- 18 Printing and reproduction of recorded media
- 19 Manufacture of coke and refined petroleum products
- 20 Manufacture of chemicals and chemical products
- 21 Manufacture of basic pharmaceutical products and pharmaceutical preparations
- 22 Manufacture of rubber and plastic products
- 23 Manufacture of other non-metallic mineral products
- 24 Manufacture of basic metals
- 25 Manufacture of fabricated metal products, except machinery and equipment
- 26 Manufacture of computer, electronic and optical products
- 27 Manufacture of electrical equipment
- 28 Manufacture of machinery and equipment n. e. c.
- 29 Manufacture of motor vehicles, trailers and semi-trailers
- 30 Manufacture of other transport equipment
- 31 Manufacture of furniture
- 32 Other manufacturing
- 33 Repair and installation of machinery and equipment

**G-4 VALUE OF CONSUMED RAW MATERIALS AND CONSUMABLES (INPUT) FOR INDUSTRIAL PRODUCTION PURPOSES, ACCORDING TO NKD 2007 SECTIONS, 2022**

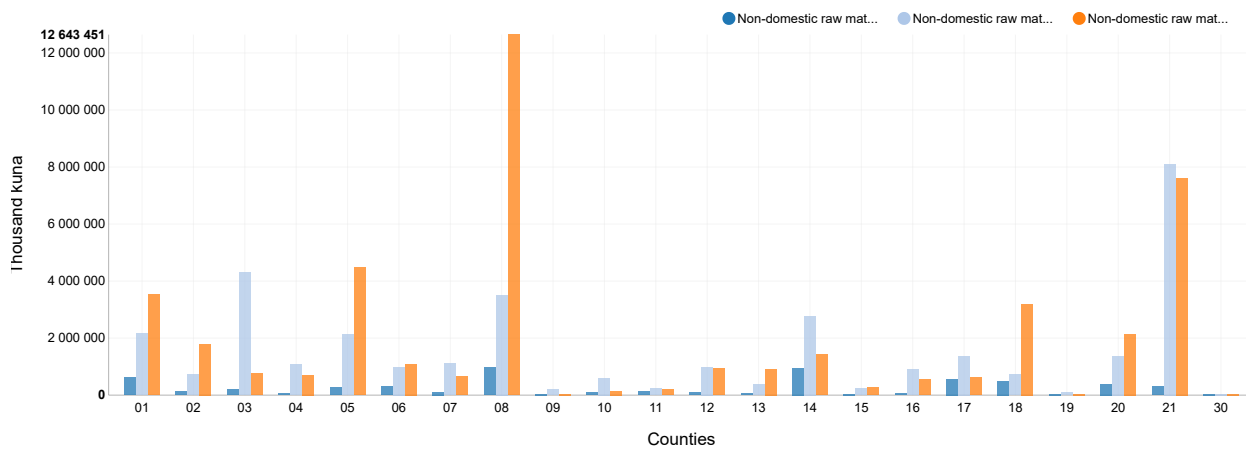


2 VALUE OF CONSUMED RAW MATERIALS AND CONSUMABLES FOR INDUSTRIAL PRODUCTION PURPOSES, ACCORDING TO USAGE IN INDUSTRIAL NKD 2007 SECTIONS AND DIVISIONS, BY COUNTIES, 2022

Thousand kuna

County of	Value of consumed raw materials and consumables, according to NRMI 2016				
	Total	Own-produced raw materials	Purchased on markets from third parties		
			Total on market	On domestic markets	On non-domestic markets
Republic of Croatia	83 663 719	5 913 201	77 750 518	33 962 113	43 788 405
Zagreb	6 337 523	630 385	5 707 138	2 171 990	3 535 148
Krapina-Zagorje	2 645 092	135 846	2 509 246	715 692	1 793 554
Sisak-Moslavina	5 280 414	199 054	5 081 360	4 311 294	770 066
Karlovac	1 833 763	50 183	1 783 580	1 073 752	709 828
Varaždin	6 895 877	273 287	6 622 590	2 138 007	4 484 583
Koprivnica-Križevci	2 380 028	304 427	2 075 601	982 998	1 092 603
Bjelovar-Bilogora	1 883 461	113 556	1 769 905	1 104 400	665 505
Primorje-Gorski kotar	17 136 348	980 167	16 156 181	3 512 730	12 643 451
Lika-Senj	252 721	35 301	217 420	193 067	24 353
Virovitica-Podravina	845 192	97 025	748 167	598 643	149 524
Požega-Slavonia	555 294	127 104	428 190	223 510	204 680
Slavonski Brod-Posavina	2 003 257	91 303	1 911 954	983 987	927 967
Zadar	1 343 353	56 459	1 286 894	373 684	913 210
Osijek-Baranja	5 160 496	953 549	4 206 947	2 779 968	1 426 979
Šibenik-Knin	563 147	41 539	521 608	245 089	276 519
Vukovar-Sirmium	1 517 526	66 721	1 450 805	900 340	550 465
Split-Dalmatia	2 562 665	569 484	1 993 181	1 369 051	624 130
Istria	4 401 564	493 146	3 908 418	716 674	3 191 744
Dubrovnik-Neretva	122 064	7 158	114 906	86 619	28 287
Međimurje	3 909 256	390 864	3 518 392	1 371 999	2 146 393
City of Zagreb	16 020 457	296 643	15 723 814	8 104 247	7 619 567
Free zones	14 221	-	14 221	4 372	9 849

G-5 VALUE OF CONSUMED RAW MATERIALS AND CONSUMABLES, BY COUNTIES AND ORIGIN, 2022



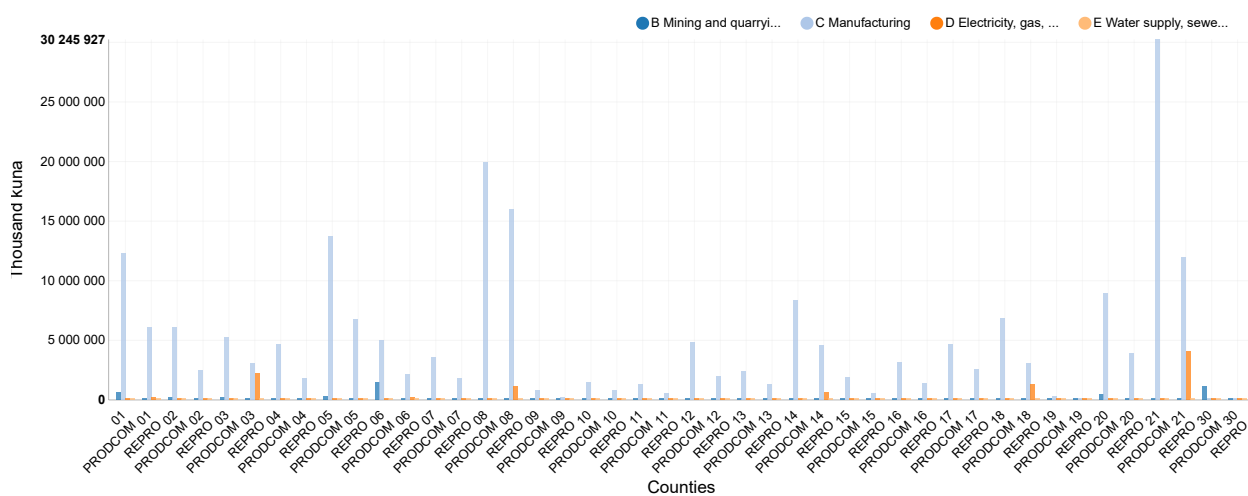
- |                                    |                                      |                                |
|------------------------------------|--------------------------------------|--------------------------------|
| 01 County of Zagreb                | 09 County of Lika-Senj               | 17 County of Split-Dalmatia    |
| 02 County of Krapina-Zagorje       | 10 County of Virovitica-Podravina    | 18 County of Istria            |
| 03 County of Sisak-Moslavina       | 11 County of Požega-Slavonija        | 19 County of Dubrovnik-Neretva |
| 04 County of Karlovac              | 12 County of Slavonski Brod-Posavina | 20 County of Međimurje         |
| 05 County of Varaždin              | 13 County of Zadar                   | 21 City of Zagreb              |
| 06 County of Koprivnica-Križevci   | 14 County of Osijek-Baranja          | 30 Free zones                  |
| 07 County of Bjelovar-Bilogora     | 15 County of Šibenik-Knin            |                                |
| 08 County of Primorje-Gorski kotar | 16 County of Vukovar-Sirmium         |                                |

### 3 MOST IMPORTANT RAW MATERIALS CONSUMED FOR INDUSTRIAL PRODUCTION PURPOSES SELECTED BY VALUE, 2022

Thousand kuna

KPD 2015 codes	KPD 2015 headings	Total	Value of raw materials consumed, thousand kuna			
			Own-produced raw materials	Purchased from third parties		
				Total	On domestic markets	On non-domestic markets
061010	Petroleum oils and oils obtained from bituminous minerals, crude	10 808 726	-	10 808 726	1 439 777	9 368 949
062010	Natural gas, liquefied or in gaseous state	8 311 812	347 339	7 964 473	7 964 473	-
014120	Raw milk from dairy cattle	2 186 581	103 499	2 083 082	1 273 704	809 378
022012	Logs of non-coniferous wood, except tropical wood	2 020 981	621	2 020 360	1 998 930	21 430
201610	Polymers of ethylene, in primary forms	1 667 321	55 373	1 611 948	112 695	1 499 253
051010	Hard coal	1 270 057	-	1 270 057	-	1 270 057
235111	Cement clinkers	1 241 920	1 163 459	78 461	53 642	24 819
244225	Aluminium foil, of a thickness <= 0,2 mm	1 233 837	-	1 233 837	479 101	754 736
101112	Meat of swine, fresh or chilled	1 167 605	82 917	1 084 688	468 291	616 397
139119	Other knitted or crocheted fabrics, including imitation fur by knitting	1 034 852	16 244	1 018 608	3 565	1 015 043
383222	Secondary raw material of ferrous metals	806 275	38 116	768 159	724 423	43 736
011112	Wheat, except durum wheat	805 414	511	804 903	797 475	7 428
243411	Cold drawn wire of non alloy steel	777 831	-	777 831	126 319	651 512
273211	Insulated winding wire	727 515	-	727 515	211 070	516 445
241031	Flat rolled products of non alloy steel, not further worked than hot rolled, of a width of >= 600 mm	708 770	-	708 770	431 704	277 066
222219	Other plastic packing goods	703 680	38 955	664 725	432 871	231 854
161023	Wood, continuously shaped along any of its edges or faces (including strips and friezes for parquet flooring, not assembled, and beadings and mouldings), of other wood	673 775	431 782	241 993	88 203	153 790
106121	Wheat or maslin flour	624 501	49 332	575 169	550 115	25 054

### G-6 COMPARISON OF TOTAL VALUE OF CONSUMED RAW MATERIALS AND CONSUMABLES (INPUT) WITH TOTAL VALUE OF INDUSTRIAL PRODUCTS SOLD (OUTPUT), ACCORDING TO NKD 2007 SECTIONS AND BY COUNTIES, 2022



01 County of Zagreb	09 County of Lika-Senj	17 County of Split-Dalmatia
02 County of Krapina-Zagorje	10 County of Virovitica-Podravina	18 County of Istria
03 County of Sisak-Moslavina	11 County of Požega-Slavonija	19 County of Dubrovnik-Neretva
04 County of Karlovac	12 County of Slavonski Brod-Posavina	20 County of Međimurje
05 County of Varaždin	13 County of Zadar	21 City of Zagreb
06 County of Koprivnica-Križevci	14 County of Osijek-Baranja	30 Free zones
07 County of Bjelovar-Bilogora	15 County of Šibenik-Knin	
08 County of Primorje-Gorski kotar	16 County of Vukovar-Sirmium	

## NOTES ON METHODOLOGY

This First Release comprises first results of the Annual Survey on Raw Material and Energy Consumption in Industry (IND-21/REPRO form) for 2022 (hereinafter referred to as REPRO Survey for 2022). The results were aggregated from data collected at the level of the Nomenclature of Raw Materials and Consumables for Industry – NRMI 2016, which is an integral part of the Statistical Standards for the Annual Survey on Raw Materials and Energy Consumption in Industry (IND-21/REPRO form) for 2022 in the Republic of Croatia. The term "industry" in the entire First Release is defined by four NKD 2007 industrial sections, B, C, D and E (only division 36) (NN, No. 58/07). This definition of industry is harmonised with the definition used in all branch industrial surveys in the Croatian Bureau of Statistics as well as with the definition used for industry statistics in the European Union.

### The legal basis of REPRO Survey

The Annual REPRO Survey for 2022 was carried out by the Croatian Bureau of Statistics on the basis of the Official Statistics Act (NN, No. 25/20) according to the above-mentioned statistical standards. The obligation to provide data is based on Article 35 and Article 38 (paragraph 1) of the Official Statistics Act.

### REPRO indicators on consumption of raw materials for industrial production purposes (from PRODCOM)

First results refer to the most recent data on the industrial consumption statistics, which were derived from the annual results of the above-mentioned REPRO Survey for 2022. REPRO results provide detailed information primarily used in the compilation of use tables (inputs) by putting them in relation to PRODCOM results on industrial production sold (output) in order to enable the analysis of commodity flow, within the framework of input-output concepts at the detailed level of raw materials/products (nomenclatures NRMI 2016/NIP 2022).

All data presented here were calculated by aggregation of individual data on consumed raw materials and consumables classified in the NRMI 2016., which is an integral part of the mentioned statistical standards. However, the commentary on the main results of REPRO Survey for 2022 (inputs) was shown in comparison with the results of the PRODCOM Survey for 2022 (outputs) in order to emphasise the purpose and objective of the Survey and provide a common framework with the PRODCOM Survey aimed at enabling the input-output analysis on a harmonised basis (in the area of national accounts).

Table 1 and graph 3 show the main results on the value of consumed raw materials and consumables for industrial production purposes by usage sections (the NKD 2007 industrial section and division level) for the Republic of Croatia in 2022. According to their origin, raw materials and consumables, including services, might be either purchased on markets (domestic or non-domestic) from third parties or might be own-produced intermediate products, but both were calculated in values of purchase prices. The regional review of aggregated data on the value of consumed raw materials and consumables, including services, for industrial production purposes, also expressed in purchase prices, was shown in table 2 and graph 6 at the county level.

### Comparability of REPRO data

In the period from 2000 to 2003, the same type of data were collected in natural figures through the Quarterly Survey on Raw Materials and Consumables and Final Energy Consumption in Industry (IND-1K form), and before that, through the joint Monthly Industrial Report (IND-1 form), on the basis of the joint Methodology for Monthly Industrial Report on Industry (IND-1 form), a part of table 2<sup>1)</sup> for both above mentioned surveys as well as on the basis of the first version of the Nomenclature of Reproduction Materials of Industry (NRMI 1997.), which was an integral part of the above mentioned Methodology. The new Statistical Standards for REPRO Survey are used for collection of data on annual basis, starting with 2004 as a reporting year, on the basis of the revised versions of NRMI 2004 and NRMI 2008, which are used for the collection of all data on individual raw materials and consumables in industry. Since all three nomenclatures (NRMI 1997, NRMI 2004 and NRMI 2008) are based on the structure of the same reference classification, KPD 1995, KPD 2008<sup>2)</sup> and KPD 2015<sup>2)</sup> versions, correspondence tables were drawn up in order to enable data comparability at a certain level, in natural figures (quantities), because earlier they were not collected in value terms.

### Coverage and units of REPRO Survey

Reporting units in the REPRO Survey on the Consumption of Raw Materials and Consumables in Industry in 2022 are all trade companies, tradesmen and other legal entities and parts thereof employing 10 and more persons that consumed raw materials and consumables for industrial production purposes within the NKD 2007 industrial sections B, C, D and E (only division 36) in the reporting annual period. Target statistical units are industrial enterprises and local units of industrial and non-industrial enterprises that consumed raw materials and consumables defined in the NRMI 2016 for industrial production purposes recorded in the PRODCOM Survey for 2022, except statistical units or parts thereof that are "physically" situated outside the territory of the Republic of Croatia. In profiling of statistical units – industrial local units – the county principle was taken into account. In cases when the observed unit operates on the territory of several different counties, e.g. in five counties, it is further divided into five local units. The coverage of the REPRO Survey on Raw Materials and Consumables and Energy Consumption in Industry for 2022 (Inputs) is identical to the coverage of the PRODCOM Survey on Industrial Production for 2022 (Outputs) in order to analyse the commodity flow within the framework of input-output concepts in a consistent and comparable way. For this reason, the coverage of reporting and statistical units is defined in the Directory of Industrial Statistical Units, which was established by the Industry, Energy and Information Society Statistics Department, having the same scope, concept and criteria of coverage as the Directory for the PRODCOM Survey.

### Concepts and definitions of REPRO Survey

Concepts and definitions used in this REPRO Survey were taken over mostly from the ESA 2010<sup>3)</sup> as well as from other EU or UN statistical terminology. They provide a further description of some of the terms used in the presentation of REPRO results, but they are not intended to provide definitive meanings of these words, because in other contexts they may have different meanings. They are intended for users of the REPRO results in order to prevent misinterpretation of data.

### Nomenclature NRMI, 2016 – 2022

The NRMI 2016 is an integral part of the above-mentioned Statistical Standards for the REPRO Survey and it can be found in Annex 3. The hierarchically structured Nomenclature of Raw Materials and Consumables, including services, version 2016, is intended for measuring the annual consumption of raw materials and consumables for industrial production purposes in volume and value terms. The NRMI 2016 version was specially made to be used in monitoring the consumption in each of the NKD 2007 industrial activity group (05.1 to 36.0). Therefore, the first three digits indicate an industrial group of activity, in which certain raw materials or consumables are usually used (including industrial services), while the following six digits in the code indicate individual raw materials or consumables classified in the NRMI 2016 and it is, in fact, a KPD 2015 item. Namely, the NRMI 2016 version is based on the KPD 2015 version and it is harmonised at the level of raw materials/products with the EU Combined Nomenclature 2022 (CN) as well as with the Customs Tariff of the Republic of Croatia for 2022<sup>4)</sup> via correspondence tables. The NRMI 2016 code of raw materials and consumables comprises 10 digits, but for each individual raw material or consumable classified in the NRMI 2016 reporting units are obliged to add the eleventh digit indicating its origin (own-produced, domestic or non-domestic) by filling in the IND-21/REPRO form. The breakdown of raw materials and consumables classified in the NRMI 2016, which are consumed by industries for the industrial production purposes at the NKD 2007 activity group level, is defined by the KPD 2015 framework and mostly covers raw materials and consumables classified in the KPD 2015 production sections A to E (only division 36). In exceptional cases, the KPD 2015 items are further divided if particular raw materials and consumables were important for a specific production but were not recognisable at the sub-category level of the KPD 2015 products. The NRMI 2016 comprises a total of 7 800 codes of raw materials and consumables, together with assigned measurement units used in expressing data on the annual consumption of raw materials and consumables.

### Raw materials and consumables

According to the REPRO Survey concept, the term "raw materials and consumables" is defined in a wider context and refers to all goods with physical dimension or to industrial services classified in the NRMI 2016 under a separate code, providing that they are used as inputs in the production process of reporting units, where they may either be transformed or used up in the production process. The NRMI 2016 comprises detailed raw materials and consumables, which include energy for transformation purposes or non-energy consumption (excluding those used for final energy consumption in industry), spare parts, small tools, containers, tubes and tires for vehicles and other consumables to be consumed by each NKD 2007 industrial activity group (05.1 – 36.0).

### Consumption of raw materials in industry

It covers the consumption of raw materials and consumables purchased and consumed by industrial statistical units in their production process in the industry sector. It also covers the consumption of own-produced raw materials and consumables (intermediate products of a reporting unit) as well as those purchased by industrial statistical units on domestic or non-domestic market (imports) and consumed in their production process in the same reporting period. In the REPRO Survey, the consumption of each raw material and consumable classified in the NRMI 2016 is recorded in volumes (for a defined measurement unit) and as values in thousands of kuna.

It has to be recorded in current purchase prices obtainable for the same kind of goods or services at the moment they are actually entering the production process, that is, when they are consumed, and not when they are purchased and put on stock (inventories). The consumption of raw materials and consumables comply with definitions under the European System of National Accounts (ESA) 2010 in the part referring to the intermediate consumption<sup>5)</sup>. It excludes the consumption of fixed assets (buildings, machinery, equipment, land) which is recorded as the consumption of fixed capital.

#### **Purchase prices**

At the time of purchase, a purchase price is the price that a purchaser actually pays for products. It includes all taxes and charges on products, excluding VAT and other deductible taxes (e.g., excises) and subsidies. It also includes any transport charges paid separately by a purchaser at a place of delivery and excludes any discount for bulk or off-peak purchase as well as interest or services charges added under credit arrangements or any charge paid as a result of failing to pay within the stated period of time. In the REPRO Survey, the value of raw materials and consumables consumed by industries has to be recorded in current purchase prices obtainable for the same kind of goods or services at the moment when they actually enter the production process, that is, when they are consumed, and not when they were purchased and put on stock (inventories), which is in line with the ESA 2010 concept.

#### **PRODCOM products**

Product is an outcome of a certain economic activity. It is a generic term used for products that have a physical dimension as well as for industrial services. It is defined by the Nomenclature of Industrial Products – NIP and is an integral part of the PRODCOM Survey on Industrial Production of the Republic of Croatia. This survey is connected with the production of industrial products defined by the NIP 2022, while for the future REPRO surveys revised versions of NIP for every subsequent reporting year will be used. These versions will be available on the website of the Croatian Bureau of Statistics, besides their publication in Narodne novine (NN) at the beginning of each year.

#### **The value of PRODCOM production sold**

It is calculated on the basis of the selling price obtained/obtainable during the reporting period (invoiced values). The value of production includes packaging costs, even if they are charged separately, while the following costs are excluded: any turnover and consumer tax charged (VAT and excises), separately charged freight costs or any discount granted to customers. If finished products are hired out or leased to third parties, the price obtainable on the market for the product in question is recorded as an estimated value.

#### **Input-output tables**

Input-output tables are means of presenting a detailed analysis of the production process and the use of goods and services (products) and the income generated in that production. They can be either in the form of (a) supply and use tables or (b) symmetric input-output tables. The term is defined within the ESA 2010 concept.

Note to all users. Detailed tables of REPRO results for 2022 will be available in the Statistical Report No. 1715 Inputs of Raw Materials in Industrial Production in 2022 – Detailed Annual Results. Data on final consumption of energy by industry according to energy types, which were collected through the REPRO Survey for 2022 for energy statistics purposes, will be an integral part of the Statistical Report No. 1717 Energy Statistics, 2022.

1) NRMI 1997. can be found in the Annex of the Notes on Methodology in the Monthly Report on Industry (IND-1 form). These Notes on Methodology were also used as a statistical standard of the Croatian Bureau of Statistics for the Quarterly Survey on Consumption of Raw Materials and Consumables and Final Consumption of Fuel in Industry (NN, No. 18/97).

2) KPD 2015. is an acronym for the Classification of Products by Activity of the Republic of Croatia (NN, No. 157/14).

3) The European System of Accounts 2010 (EU Regulation No 549/2013 of the European Parliament and of the Council of 21 May 2013) is harmonised with the SNA 2008 – the UN System of National Accounts (ISBN 978-92-1-161522-7). The acronym ESA 2010 is used throughout the text.

4) The Customs Tariff of the Republic of Croatia (NN, No. 124/15), the CT 2022 version, is harmonised with the CN 2022 EU version up to the eighth-digit figure

5) Harmonised with the definition of the intermediate consumption taken over from ESA 2010 (3.69). For the acronym "ESA 2010", see footnote 3.

#### **Abbreviations**

CN 2022	Combined Nomenclature, 2022 version
CT 2022	Customs Tariff, 2022 version
ESA 2010	European System of National Accounts, 2010 version
hl	hectolitre
KPD	Classification of Products by Activity
mm	millimetre
n. e. c.	not elsewhere classified
NIP 2022.	Nomenclature of Industrial Products, 2022 version
NKD 2007	National Classification of Activities, 2007 version
NN	Narodne novine, official gazette of the Republic of Croatia
NRMI	Nomenclature of Selected Raw Materials in Industry
PRODCOM	PRODUCTION in the COMMunity
REPRO	Annual Survey on Raw Materials and Energy Consumption in Industry
UN	United Nations
VAT	value added tax
'000	thousand

#### **Symbols**

-	no occurrence
...	data not available
≥	more than or equal to
≤	less than or equal to



Press corner: [press@dzs.hr](mailto:press@dzs.hr)

Persons responsible:

Milenka Primorac Čačić, Director of Business Statistics Directorate  
Lidija Brković, Director General

Prepared by:

Ivana Zoroja Milić and Goran Dolšak

**USERS ARE KINDLY REQUESTED TO STATE THE SOURCE.**

Customer Relations and Data Protection Department

Information and user requests

Phone: (+385 1) 48 06 138, 48 06 154

E-mail: [stat.info@dzs.hr](mailto:stat.info@dzs.hr)

Subscription

Phone: (+385 1) 48 06 115

E-mail: [prodaja@dzs.hr](mailto:prodaja@dzs.hr)