

First Release

Year: LX.

Zagreb, 21 November 2023

RAD-2023-1-2/2

ISSN 1334-0557



AVERAGE MONTHLY NET AND GROSS EARNINGS OF PERSONS IN PAID EMPLOYMENT, BY ACCOUNTING PERIODS, 2023

For the second quarter of 2023, the average monthly paid net earnings per person in paid employment in legal entities in the Republic of Croatia amounted to 1 135 euro, which represented a nominal increase of 2.3%, while in real terms they remained at the same level, as compared to the first quarter of 2023. As compared to the same period of 2022, they showed a nominal increase of 11.8% and a real one of 3.4%.

For the second quarter of 2023, the average monthly gross earnings per person in paid employment in legal entities in the Republic of Croatia amounted to 1 566 euro, which represented a nominal increase of 2.6% and a real one of 0.3%, as compared to the first quarter of 2023. As compared to the same period of 2022, they showed a nominal increase of 13.6% and a real one of 5.1%.

For the third quarter of 2023, the average monthly paid off net earnings per person in paid employment in legal entities in the Republic of Croatia amounted to 1 153 euro, which represented a nominal increase of 1.6% and a real one of 0.2%, as compared to the second quarter of 2023. As compared to the same period of 2022, they showed a nominal increase of 13.9% and a real one of 6.2%.

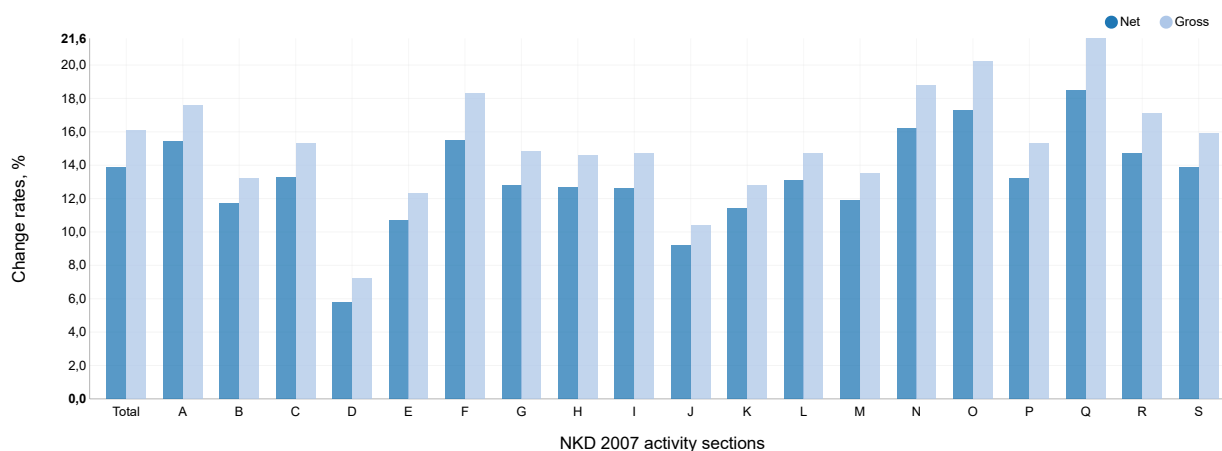
For the third quarter of 2023, the average monthly gross earnings per person in paid employment in legal entities in the Republic of Croatia amounted to 1 597 euro, which represented a nominal increase of 2.0% and a real one of 0.6%, as compared to the second quarter of 2023. As compared to the same period of 2022, they showed a nominal increase of 16.1% and a real one of 8.2%.

Detailed data can be downloaded on the link [Statistics in Line](#).

1 AVERAGE MONTHLY NET AND GROSS EARNINGS, QUARTERLY DATA, 2023

	I – III 2023	IV – VI 2023	VII – IX 2023	Indices			
				$\frac{IV - VI 2023}{I - III 2023}$	$\frac{IV - VI 2023}{IV - VI 2022}$	$\frac{VII - IX 2023}{IV - VI 2023}$	$\frac{VII - IX 2023}{VII - IX 2022}$
Net earnings							
Average monthly paid net earnings per employee, euro	1 110	1 135	1 153	102,3	111,8	101,6	113,9
Real net earnings per employee				100,0	103,4	100,2	106,2
Gross earnings							
Average monthly gross earnings per employee, euro	1 526	1 566	1 597	102,6	113,6	102,0	116,1
Real gross earnings per employee				100,3	105,1	100,6	108,2

G-1 CHANGE RATES OF AVERAGE MONTHLY NET AND GROSS EARNINGS, ACCORDING TO NKD 2007, THIRD QUARTER OF 2023, JULY – SEPTEMBER 2022 = 100



NKD 2007 activity sections

- A Agriculture, forestry and fishing
- B Mining and quarrying
- C Manufacturing
- D Electricity, gas, steam and air conditioning supply
- E Water supply; sewerage, waste management and remediation activities
- F Construction
- G Wholesale and retail trade; repair of motor vehicles and motorcycles
- H Transportation and storage
- I Accommodation and food service activities
- J Information and communication
- K Financial and insurance activities
- L Real estate activities
- M Professional, scientific and technical activities
- N Administrative and support service activities
- O Public administration and defence; compulsory social security
- P Education
- Q Human health and social work activities
- R Arts, entertainment and recreation
- S Other service activities

NOTES ON METHODOLOGY

Data sources

Data on monthly net and gross earnings as well as data on paid hours were gathered by processing data from the Report on Income, Income Tax and Surtax as well as Contributions for Mandatory Insurances (JOPPD form), in effect since 1 January 2014.

All persons or entities that are the payers of income for which the income tax regulations prescribe the obligation of accounting and paying deduction tax are under the obligation to submit the JOPPD form.

Coverage and comparability

Data comprise persons in employment in legal entities of all types of ownership, government bodies, and bodies of local and regional self-government units, on the territory of the Republic of Croatia.

Persons employed in crafts and trades and free lances and employed insured persons – private farmers are not covered, so data on their pays are not included in the data on average earnings.

Data on monthly net and gross earnings of persons employed in legal entities include net and gross earnings of persons in permanent employment, irrespective of the kind of employment and number of working-hours.

Persons in part-time employment who received earnings are expressed in full-time equivalent.

Data on monthly net and gross earnings are presented according to realised pay-offs in the current for the previous month, which is in line with the pay-off dynamics in most legal entities, so the average earnings refer to the month for which the pay-off has been received.

Data from January 2016 and onwards are not comparable to previously published monthly data.

Definitions

Average monthly paid off net earnings comprise income of a person in employment earned for work done during regular working hours as well as annual leave, paid leave, public holidays and day-offs as prescribed by law, sickness leave up to 42 days, absence for continuing professional education, during lay-off and job stop caused against person's will and of no fault of his own and net pays on the basis of compensations, allowances and rewards in sums which are subjects to contributions, taxes and surtaxes.

Average monthly gross earnings include all kinds of net pays on the basis of employment and the following mandatory allocations: pension insurance contributions, income tax and surtax on income tax.

Average monthly net and gross earnings per person in employment are calculated by dividing the total of pay-offs with the number of persons in employment expressed in full-time equivalent.

Indices of nominal net and gross earnings are calculated from the data on average monthly net and gross earnings for the respective months and year.

Real indices of net and gross earnings are calculated by dividing index of nominal net and gross earnings with a consumer price index for the respective month and year.

Abbreviations

NKD 2007 National Classification of Activities, 2007 version

Published by the Croatian Bureau of Statistics, Zagreb, Ilica 3, P. O. B. 80.

Phone: (+385 1) 48 06 111

Press corner: press@dzs.hr

Persons responsible:

Dubravka Rogić Hadžalić, Director of Demographic and Social Statistics Directorate
Lidija Brković, Director General

Prepared by:

Dean Maslovara, Zdenka Mandarić and Borislav Maoduš

USERS ARE KINDLY REQUESTED TO STATE THE SOURCE.

Customer Relations and Data Protection Department

Information and user requests

Phone: (+385 1) 48 06 138, 48 06 154

E-mail: stat.info@dzs.hr

Subscription

Phone: (+385 1) 48 06 115

E-mail: prodaja@dzs.hr