

KRATKOROČNI POKAZATELJI ENERGETSKE STATISTIKE U SRPNJU 2021. PRVI REZULTATI

SHORT-TERM INDICATORS OF ENERGY STATISTICS, JULY 2021 FIRST RESULTS

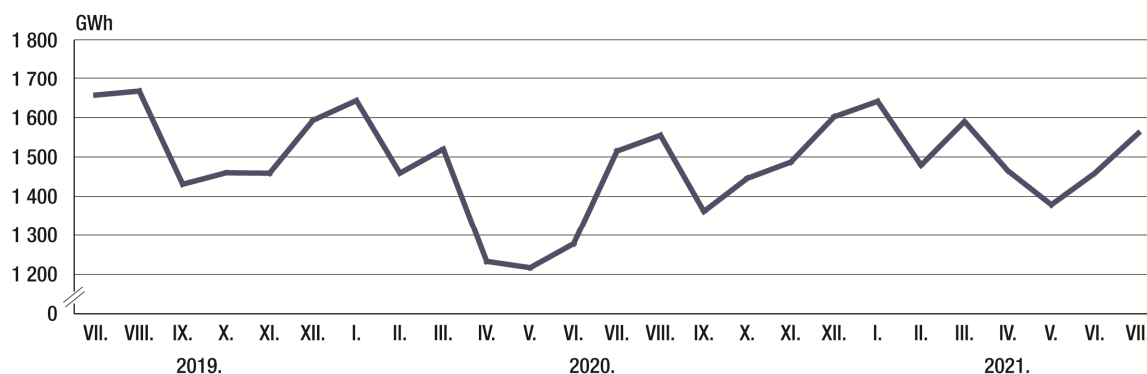
U srpnju 2021. električna energija raspoloživa za potrošnju iznosila je 1 560 GWh. Ta količina sadržava i gubitke u električnoj mreži.

In July 2021, electricity available for the inland market amounted to 1 560 GWh, including losses in the electricity network.

Kod drugih energenata količina raspoloživa za potrošnju sadržava i količine energenata koje mogu završiti na skladištu kod finalnih potrošača ili u maloprodaji.

As for other energy products, the quantity available for the inland market also contains the quantities of energy products that may end up in warehouses, either in those of final consumers or in retail trade.

G-1. ELEKTRIČNA ENERGIJA, RASPOLOŽIVA ZA TUZEMNU POTROŠNJU, SRPANJ 2019. – SRPANJ 2021.
ELECTRICITY AVAILABLE FOR INLAND MARKET, JULY 2019 – JULY 2021



1. ELEKTRIČNA ENERGIJA ELECTRICITY

GWh

Opskrba	Električna energija Electricity								Supply
	2020.				2021.				
	IV.	V.	VI.	VII.	IV.	V.	VI.	VII.	
Ukupna bruto proizvodnja	674	870	947	989	1 101	1 050	906	1 008	Total gross production
Hidroelektrane	337	338	389	325	598	678	427	354	Hydro power plants
Termoelektrane i CHP na fosilna goriva	110	248	370	446	227	125	296	426	Thermal power plants and CHP on fossil fuels
Termoelektrane i CHP na obnovljiva goriva	76	83	72	74	81	84	81	88	Thermal power plants and CHP on renewable fuels
Vjetroelektrane	134	184	99	126	180	147	87	122	Wind power plants
Sunčane elektrane	9	8	8	10	7	8	10	10	Solar power plants
Geotermalne elektrane	8	9	9	8	8	8	5	8	Geothermal power plants
Ukupna neto proizvodnja	662	853	920	955	1 083	1 035	880	977	Total net production
Hidroelektrane	334	336	388	323	596	677	426	353	Hydro power plants
Termoelektrane i CHP na fosilna goriva	109	243	352	424	219	122	279	408	Thermal power plants and CHP on fossil fuels
Termoelektrane i CHP na obnovljiva goriva	69	76	67	68	76	75	75	80	Thermal power plants and CHP on renewable fuels
Vjetroelektrane	133	182	98	124	178	146	86	120	Wind power plants
Sunčane elektrane	9	8	8	10	7	8	10	10	Solar power plants
Geotermalne elektrane	7	7	7	6	7	6	4	6	Geothermal power plants
Uvoz	821	770	828	1 078	923	917	931	931	Import
Izvoz	216	370	448	510	529	556	337	337	Export
Potrošeno iz mreže za crpke u reverzibilnim elektranama	34	36	22	8	12	17	15	11	Energy absorbed by storage pumping
Raspoloživo za tuzemnu potrošnju	1 233	1 217	1 278	1 515	1 465	1 379	1 459	1 560	Available for inland market

2. PRIRODNI PLIN NATURAL GAS

Opskrba	Mjerna jedinica	Prirodni plin Natural gas								Unit of measure	Supply
		2020.				2021.					
		IV.	V.	VI.	VII.	IV.	V.	VI.	VII.		
Proizvodnja	mil. m ³ TJ (GOM)	78 3 108	79 3 132	75 2 991	76 3 047	67 2 663	69 2 736	63 2 521	66 2 636	mln m ³ TJ (GCV)	Production
Uvoz	mil. m ³ TJ (GOM)	150 5 824	152 5 923	185 7 156	185 7 172	233 9 115	126 4 947	186 7 419	206 8 155	mln m ³ TJ (GCV)	Import
Izvoz	mil. m ³ TJ (GOM)	3 115	3 115	3 108	3 104	3 120	8 331	16 605	2 68	mln m ³ TJ (GCV)	Export
Promjena zaliha	mil. m ³ TJ (GOM)	29 1 106	36 1 373	75 2 850	63 2 414	26 1 036	5 139	102 3 742	90 3 424	mln m ³ TJ (GCV)	Variation of stocks
Raspoloživo za tuzemnu potrošnju	mil. m ³ TJ (GOM)	196 7 711	192 7 567	182 7 189	195 7 701	271 10 622	182 7 213	131 5 593	180 7 299	mln m ³ TJ (GCV)	Available for inland market

3. UGLJIKOVODICI HYDROCARBONS

3.1. SIROVA NAFTA CRUDE OIL

tis. tona
'000 tonnes

Opskrba	Sirova nafta Crude oil								Supply
	2020.				2021.				
	IV.	V.	VI.	VII.	IV.	V.	VI.	VII.	
Proizvodnja	49	51	49	50	46	47	45	47	Production
Uvoz	346	222	270	187	195	224	330	85	Import
Izvoz	27	73	21	56	34	44	41	45	Export
Promjena zaliha	116	-18	67	-59	9	-24	112	-164	Variation of stocks
Prerada u rafinerijama	252	218	231	240	198	251	222	251	Refinery input

3.2. NAFTNI DERIVATI – UKUPNO PETROLEUM PRODUCTS – TOTAL

tis. tona
'000 tonnes

Opskrba	Naftni derivati Petroleum products								Supply
	2020.				2021.				
	IV.	V.	VI.	VII.	IV.	V.	VI.	VII.	
Proizvodnja	295	284	279	319	282	332	297	320	Production
Uvoz	99	165	151	95	109	126	171	123	Import
Izvoz	235	202	181	178	151	197	195	221	Export
Promjena zaliha	-28	23	5	-61	-5	8	1	-111	Variation of stocks
Raspoloživo za tuzemnu potrošnju	187	224	244	297	245	253	272	333	Available for inland market

3.2.1. MOTORNI BENZIN
MOTOR GASOLINE

tis. tona
'000 tonnes

Opskrba	Motorni benzin Motor gasoline								Supply
	2020.				2021.				
	IV.	V.	VI.	VII.	IV.	V.	VI.	VII.	
Proizvodnja	68	52	77	75	72	78	76	78	Production
Uvoz	13	8	6	4	16	7	6	6	Import
Izvoz	67	46	48	48	52	39	58	49	Export
Promjena zaliha	-5	-20	-2	-19	5	8	-12	-28	Variation of stocks
Raspoloživo za tuzemnu potrošnju	19	34	37	50	31	38	36	63	Available for inland market

3.2.2. PLINSKO DIZELSKO GORIVO
GAS/DIESEL OIL

tis. tona
'000 tonnes

Opskrba	Plinsko dizelsko gorivo Gas/diesel oil								Supply
	2020.				2021.				
	IV.	V.	VI.	VII.	IV.	V.	VI.	VII.	
Proizvodnja	152	139	123	154	135	149	140	150	Production
Uvoz	62	126	110	59	58	81	128	88	Import
Izvoz	101	106	67	71	52	61	86	105	Export
Promjena zaliha	-9	14	19	-39	-14	9	7	-65	Variation of stocks
Raspoloživo za tuzemnu potrošnju	122	145	147	181	155	160	175	198	Available for inland market

3.2.3. LOŽIVA ULJA
FUEL OIL

tis. tona
'000 tonnes

Opskrba	Loživa ulja Fuel oil								Supply
	2020.				2021.				
	IV.	V.	VI.	VII.	IV.	V.	VI.	VII.	
Proizvodnja	23	34	35	43	31	40	33	23	Production
Uvoz	3	2	6	-	1	1	-	-	Import
Izvoz	45	8	48	39	32	60	32	31	Export
Promjena zaliha	-22	26	-10	-	-2	-22	-	-9	Variation of stocks
Raspoloživo za tuzemnu potrošnju	3	2	3	4	2	3	1	1	Available for inland market

3.2.4. OSTALI NAFTNI DERIVATI
OTHER PETROLEUM PRODUCTS

tis. tona
'000 tonnes

Opskrba	Ostali naftni derivati Other petroleum products								Supply
	2020.				2021.				
	IV.	V.	VI.	VII.	IV.	V.	VI.	VII.	
Proizvodnja	52	59	44	47	44	65	48	69	Production
Uvoz	21	29	29	32	34	37	37	29	Import
Izvoz	22	42	18	20	15	37	19	36	Export
Promjena zaliha	8	3	-2	-3	6	13	6	-9	Variation of stocks
Raspoloživo za tuzemnu potrošnju	43	43	57	62	57	52	60	71	Available for inland market

4. KRUTA GORIVA
CRUDE FUELS

4.1. KAMENI UGLJEN
HARD COAL

tis. tona
'000 tonnes

Opskrba	Kameni ugljen <i>Hard coal</i>								Supply
	2020.				2021.				
	IV.	V.	VI.	VII.	IV.	V.	VI.	VII.	
Proizvodnja	-	-	-	-	-	-	-	-	<i>Production</i>
Uvoz	8	24	51	-	5	74	8	72	<i>Import</i>
Izvoz	-	-	-	-	-	-	-	-	<i>Export</i>
Promjena zaliha	-1	13	-1	-62	-7	59	-57	1	<i>Variation of stocks</i>
Raspoloživo za tuzemnu potrošnju	9	11	52	62	12	15	65	71	<i>Available for inland market</i>

4.2. KOKS
COKE

tis. tona
'000 tonnes

Opskrba	Koks <i>Coke</i>								Supply
	2020.				2021.				
	IV.	V.	VI.	VII.	IV.	V.	VI.	VII.	
Proizvodnja	-	-	-	-	-	-	-	-	<i>Production</i>
Uvoz	1	2	2	-	3	2	2	3	<i>Import</i>
Izvoz	-	-	-	-	-	-	-	-	<i>Export</i>
Promjena zaliha	-	-	-	-	-	-	-	-	<i>Variation of stocks</i>
Raspoloživo za tuzemnu potrošnju	1	2	2	-	3	2	2	3	<i>Available for inland market</i>

4.3. MRKI UGLJEN
BROWN COAL

tis. tona
'000 tonnes

Opskrba	Mrki ugljen <i>Brown coal</i>								Supply
	2020.				2021.				
	IV.	V.	VI.	VII.	IV.	V.	VI.	VII.	
Proizvodnja	-	-	-	-	-	-	-	-	<i>Production</i>
Uvoz	-	-	-	-	-	-	-	-	<i>Import</i>
Izvoz	-	-	-	-	-	-	-	-	<i>Export</i>
Promjena zaliha	-	-	-	-	-	-	-	-	<i>Variation of stocks</i>
Raspoloživo za tuzemnu potrošnju	-	-	-	-	-	-	-	-	<i>Available for inland market</i>

METODOLOŠKA OBJAŠNJENJA

Ovo Priopćenje sastavlja se na temelju više statističkih istraživanja, i to: Mjesečnog istraživanja o industrijskoj proizvodnji i zaposlenim osobama (IND-1/KPS/M), Mjesečnog istraživanja o naftnim rafinerijama (ERG-1/N), Mjesečnog istraživanja o uvozu, izvozu i zalihama nafte i naftnih derivata (ERG-2/N), Mjesečnog istraživanja o uvozu, izvozu, zalihama i isporukama prirodnog plina (ERG-1/P), Mjesečnog istraživanja o uvozu, izvozu, zalihama i isporukama prirodnog plina (ERG-1/P), Mjesečnog istraživanja o koksa (ERG-1/U), Mjesečnog istraživanja o elektranama (ERG-1/EL) te podataka dobivenih iz Jedinственe carinske deklaracije o izvozu i uvozu robe.

Mjesečni podaci u ovom Priopćenju služe za praćenje kretanja energenata prema navedenim obilježjima, a zbrojeni za 12 mjeseci ne predstavljaju godišnje bilančne podatke jer zbog brzine davanja podataka u mjesečnoj dinamici ili storniranja nekih isporuka može doći do manjih odstupanja u mjesečnim podacima. Zbog toga preporučujemo sljedeće izvore za godišnje podatke: godišnje Statističko izvješće "Energetska statistika", koje objavljuje Državni zavod za statistiku, i godišnji energetska pregled "Energija u Hrvatskoj", u izdanju Ministarstva zaštite okoliša i energetike.

Bruto proizvodnja električne energije jest proizvedena električna energija na generatoru hidroelektrana, termoelektrana i CHP na fosilna goriva, termoelektrana i CHP na obnovljiva goriva, vjetroelektrana i sunčanih elektrana.

Neto proizvodnja električne energije jest električna energija isporučena elektromreži iz elektrane. To je razlika između proizvedene električne energije na generatoru i vlastite potrošnje.

Geotermalne elektrane proizvode energiju dostupnu kao toplinu koja isijava iz unutrašnjosti Zemljine kore, uglavnom u obliku vruće vode ili pare; isključujući okolnu toplinu koju sakupljaju toplinske crpke iz tla. Proizvodnja geotermalne energije jest razlika između entalpije tekućine dobivene iz bušotine i krajnje otpadne tekućine.

Raspoloživa energija za potrošnju jest količina energenata raspoloživa za finalnu tuzemnu potrošnju u koju su uključeni gubici i zalihe kod finalnih potrošača i u maloprodaji.

Sirova nafta jest mineralno ulje prirodnog podrijetla koje obuhvaća mješavinu ugljikovodika i dodatnih nečistoća, npr. sumpora. Nalazi se u tekućem agregatnom stanju pod normalnom temperaturom i tlakom, a njezina fizikalna svojstva (gustoća, viskoznost itd.) jako variraju. U sirovu naftu uključeni su i kondenzati koji se dobivaju iz vezane ili nevezane proizvodnje plina pomiješanoga s komercijalnom sirovom naftom.

Prirodni plin sastoji se od plinova, nastaje prirodno u podzemnim nalazištima bilo u tekućem bilo u plinovitom stanju. Uglavnom se sastoji od metana. Uključuje i "nevezani" plin, koji potječe iz nalazišta što daju ugljikovodike samo u plinovitom stanju, i "vezani" plin, proizveden zajedno sa sirovom naftom, te metan iskopan iz rudnika ugljena (plin iz rudnika). Prirodni plin uključuje i industrijski proizveden plin (proizveden od gradskoga ili industrijskog otpada ili kanalizacije). Ispuhane ili spaljene količine prirodnog plina ne računaju se.

Naftni derivati jesu svi proizvodi koji su proizvedeni u naftnim rafinerijama, a to su: rafinerijski plin, ukapljeni plin, motorni benzini, petrolej, mlazno gorivo, dizelsko gorivo, ekstralako loživo ulje, loživo ulje, primarni benzin, *white spirit*, maziva ulja, bitumen, parafin, naftni koks i ostali proizvodi rafinerija.

Pod **ostalim naftnim derivatima** iskazani su i ukapljeni plinovi u degazolnazi.

NOTES ON METHODOLOGY

This First Release is prepared on the basis of several statistical surveys, as follows: the Monthly Survey on Industrial Production and Persons Employed (IND-1/KPS/M form), the Monthly Survey on Oil Refineries (ERG-1/N form), the Monthly Survey on Import, Export and Stocks of Petroleum and Petroleum Products (ERG-2/N form), the Monthly Survey on Import, Export, Stocks and Deliveries of Natural Gas (ERG-1/P form), the Monthly Survey on Import, Export, Stocks, Deliveries and Consumption of Coal and Coke (ERG-1/U form) and the Monthly Survey on Electricity Power Plants (ERG-1/EL form) as well as on the data obtained from the Single Administrative Document on export and import of goods.

The monthly data in this First Release are used for monitoring the changes in energy products according to the mentioned characteristics. Their sum for 12 months does not represent the annual balance data, due to the fast output of monthly data or to the fact that some deliveries are cancelled, which may lead to slight deviations from the monthly data. For that reason, the following sources of annual data are recommended: the annual Statistical Report entitled Energy Statistics published by the Croatian Bureau of Statistics and the annual energy review entitled Energy in Croatia published by the Ministry of Environment and Energy.

Gross electricity production is the sum of the total electrical energy production by all the generating sets concerned (hydro power plants, thermal power plants and CHP on fossil fuels, thermal power plants and CHP on renewable fuels, wind power plants and solar power plants).

Net electricity production is the electrical energy supplied from a power station to a power-supply grid and it represents the difference between the electrical energy produced in a generator and own supply.

Geothermal power plants produce energy available as heat emitted from within the Earth's crust, usually in the form of hot water or steam; excluding the surrounding heat collected by the heat pumps from the ground. This energy production is the difference between the enthalpy of the fluid produced in the production borehole and that of the fluid eventually disposed of.

Energy available for consumption is the quantity of energy products available for final consumption on the inland market, including losses and stocks at final consumers and in retail trade.

Crude oil is a mineral oil of natural origin that includes a mixture of hydrocarbons and associated impurities, such as sulphur. It exists in the liquid phase under normal surface temperature and pressure and its physical characteristics (density, viscosity, etc.) are highly variable. This category includes field or lease condensates recovered from associated and non-associated gases where it is commingled with the commercial crude oil stream.

Natural gas is comprised of gases, occurring naturally in underground deposits, whether liquefied or gaseous, consisting mainly of methane. It includes both "non-associated" gas originating from fields producing hydrocarbons only in gaseous form, and "associated" gas produced in association with crude oil as well as methane recovered from coal mines (colliery gas). Manufactured gas (produced from municipal or industrial waste or sewage) is also included, while vented or flared quantities of natural gas are excluded.

Petroleum products are all products produced in petroleum refineries: refinery gas, liquefied petroleum gas, motor gasoline, kerosene, jet fuel, diesel oil, light fuel oil, fuel oil, naphtha, white spirit, lubricating oils, bitumen, paraffin waxes, petroleum coke and other refinery products.

Other petroleum products encompass liquefied petroleum gas in NGL plants.

Pod **uvozom** se podrazumijevaju količine energenata koje su prešle državnu granicu Republike Hrvatske bez obzira na to jesu li ili nisu ocarinjene. Količine nafte, naftnih proizvoda i tekućeg plina pod ugovorima o proizvodnji koje se ostvaruju u inozemstvu također treba iskazati u ovoj tablici kao uvoz. Energenti u tranzitu kroz Republiku Hrvatsku ne iskazuju se u ovom obrascu ni kao uvoz ni kao izvoz.

Pod **izvozom** se podrazumijevaju količine koje su prešle državnu granicu Republike Hrvatske bez obzira na to jesu li ili nisu ocarinjene i jesu li ili nisu vlasništvo hrvatskog rezidenta.

Za uvoz i izvoz električne energije primjenjuje se Eurostatova definicija koja uključuje i tranzit: količine električne energije smatraju se uvezenima ili izvezenima kada prijeđu političke granice zemlje bez obzira na to jesu li ili nisu ocarinjene. Ako električna energija prolazi kroz zemlju, količina te energije prijavljuje se i kao uvoz i kao izvoz.

Pod **promjenom zaliha** podrazumijevaju se promjene stanja zaliha na početku i kraju mjeseca u poduzećima koja se bave proizvodnjom, transformacijom, uvozom i izvozom energije. Razlika se dobije tako što se od stanja zaliha na kraju posljednjeg dana u mjesecu oduzme stanje zaliha na početku prvoga radnog dana u istome mjesecu.

Import includes the quantities of energy products that crossed the state border of the Republic of Croatia, regardless of whether or not they were cleared through the customs. The quantities of petroleum and petroleum products and liquid gas that are under contracts on production realised abroad are also to be presented in this table as import. Energy products in transit through the Republic of Croatia are not presented in this survey form either as import or as export.

Export includes the quantities that crossed the state border of the Republic of Croatia, regardless of whether or not they were cleared through the customs and whether or not they are owned by a Croatian resident.

For import and export of electricity, a Eurostat definition is used which includes transit: amounts of electricity are considered imported or exported when they have crossed the political boundaries of a country, regardless of whether customs clearance has taken place or not. If electricity transits through a country, the amount should be reported as both import and export.

Variation of stocks includes stock changes at the beginning and at the end of a month in enterprises engaged in the production, transformation, import and export of energy. The difference is calculated by subtracting the state of stocks at the beginning of the first working day in a month from the state of stocks at the end of the last day in the same month.

Kratice

CHP	kombinirana proizvodnja toplinske i električne energije
Eurostat	Statistički ured Europske unije
GOM	gornja ogrjevna moć
GWh	gigavatsat
m ³	kubični metar
mil.	milijun
tis.	tisuća
TJ	teradžul

Znakovi

- nema pojave

Abbreviations

CHP	combined heat and power generation
Eurostat	Statistical Office of the European Communities
GCV	gross calorific value
GWh	gigawatt hour
m ³	cubic metre
mln	million
NGL	natural gas liquids
TJ	terajoule
'000	thousand

Symbols

- no occurrence

Objavljuje Državni zavod za statistiku Republike Hrvatske, Zagreb, Ilica 3, p. p. 80.

Published by the Croatian Bureau of Statistics, Zagreb, Ilica 3, P. O. B. 80

Telefon/ Phone: +385 (0) 1 4806-111, telefaks/ Fax: +385 (0) 1 4817-666

Novinarski upiti/ Press corner: press@dzs.hr

Odgovorne osobe:

Persons responsible:

Edita Omerzo, načelnica Sektora prostornih statistika

Edita Omerzo, Director of Spatial Statistics Directorate

Lidija Brković, glavna ravnateljica

Lidija Brković, Director General

Priredili: Darko Jukić, Ana Grabić, Mirjana Petanjek i Željka Oršanić Kelebuž

Prepared by: Darko Jukić, Ana Grabić, Mirjana Petanjek and Željka Oršanić Kelebuž

MOLIMO KORISNIKE DA PRI KORIŠTENJU PODATAKA NAVEDU IZVOR.
USERS ARE KINDLY REQUESTED TO STATE THE SOURCE.

Služba za odnose s korisnicima i zaštitu podataka

Customer Relations and Data Protection Department

Informacije i korisnički zahtjevi
Information and user requests

Pretplata publikacija
Subscription

Telefon/ Phone: +385 (0) 1 4806-138, 4806-154
Elektronička pošta/ E-mail: stat.info@dzs.hr
Telefaks/ Fax: +385 (0) 1 4806-148

Telefon/ Phone: +385 (0) 1 4806-115
Elektronička pošta/ E-mail: prodaja@dzs.hr
Telefaks/ Fax: +385 (0) 1 4806-148