

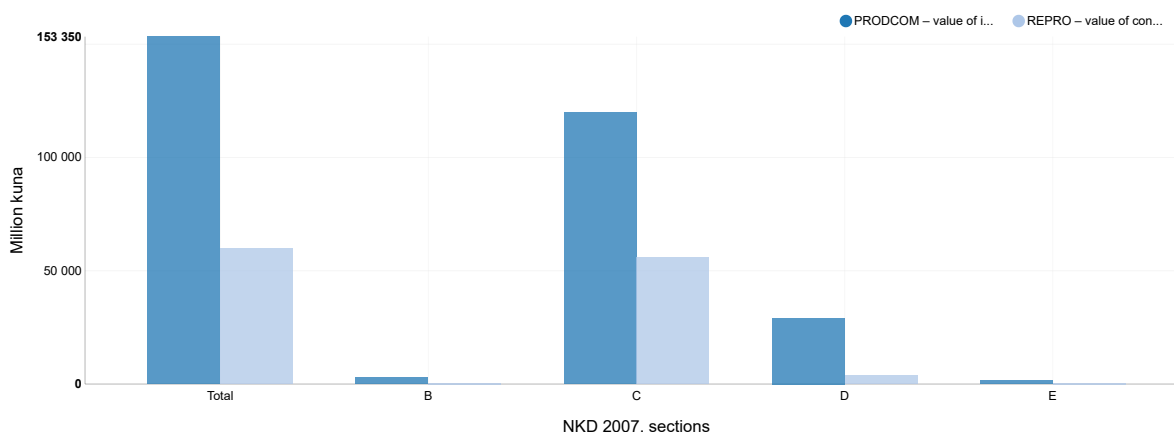


INPUTS OF RAW MATERIALS AND CONSUMABLES IN INDUSTRIAL PRODUCTION, 2021 – Provisional Data

In 2021, the total value of consumed raw materials and consumables used as inputs in the industrial production process in enterprises engaged in industrial production in the Republic of Croatia amounted to 60 014 million kuna according to the coverage of the Annual Survey on Raw Material Consumption in Industry for 2021. According to the results of the PRODCOM Survey on Industrial Production in 2021¹⁾, as compared to the total value of industrial products sold (output), out of the total of 153 350 million kuna generated by the same enterprises, the value of raw materials and consumables used as inputs in that industrial production had a share of 39.1% in the output value of industry. In other words, the total value of industrial products sold generated by the enterprises in 2021 was 93 336 million kuna (60.9%) higher than the expenditure for consumed raw materials and consumables used as input in that production, according to a rough input-output calculation.

1) See the Commentary and the Notes on Methodology in the First Release IND-2022-5-1 Production and Sale of Industrial Products (PRODCOM), 2021.

G-1 COMPARISON OF VALUES OF CONSUMED RAW MATERIALS AND CONSUMABLES AS INPUTS AND INDUSTRIAL PRODUCTS SOLD, 2021



According to the industrial sections of the NKD 2007., the highest value of consumed raw materials and consumables used as inputs in the industrial production in 2021 was recorded in section C Manufacturing, 55 832 million kuna, followed by section D Electricity, gas, steam and air conditioning supply, 3 947 million kuna, and section B Mining and quarrying, 227 million kuna, while the lowest value was recorded in section E Water supply; sewerage, waste management and remediation activities, 8 million kuna.

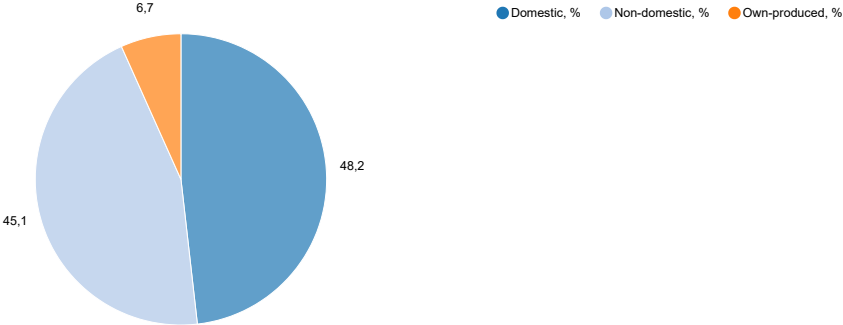
Comparing the consumption by the NKD 2007. industrial divisions (05 – 36), the highest value of consumed raw materials and consumables was realised in division 10 Manufacture of food products (11 594 million kuna) and in division 19 Manufacture of coke and refined petroleum products (8 730 million kuna), while the lowest value of consumed raw materials was realised in division 09 Mining support service activities (5 million kuna).

The analysis of the value of raw materials and consumables used as inputs in the industrial production in 2021 by origin of raw materials and consumables showed that there were 6.7% (4 025 million kuna) of raw materials and consumables consumed from own-production, while 93.3% (55 990 million kuna) was purchased on the market from third parties, out of which 48.2% (28 916 million kuna) was purchased on domestic market and 45.1% (27 074 million kuna) on non-domestic market (import).

The greatest value of consumption of raw materials and consumables in the Republic of Croatia in 2021 was recorded in the City of Zagreb, 10 915 million kuna, and in the County of Primorje-Gorski kotar, 10 184 million kuna. The lowest consumption of raw materials and consumables for industrial production purposes in 2021 was realised in the County of Dubrovnik-Neretva, 79 million kuna, and in the County of Lika-Senj, 191 million kuna.

Data on the value of consumed raw materials and consumables for purposes of the industrial production in 2021 were compiled by the processing of the Annual Survey on Raw Materials and Energy Consumption in Industry for 2021 (IND-21/REPRO form), with the coverage of 3 000 industrial local units belonging to legal entities and tradesmen employing 10 and more persons. It must be stressed that the REPRO Survey for 2021 had exactly the same coverage as the already mentioned Annual PRODCOM Survey on Industrial Production for 2021 in order to achieve the comparability and consistency of data for the input-output analysis at the level of products/raw materials.

G-2 STRUCTURE OF VALUE OF CONSUMED RAW MATERIALS AND CONSUMABLES, BY ORIGIN, 2021

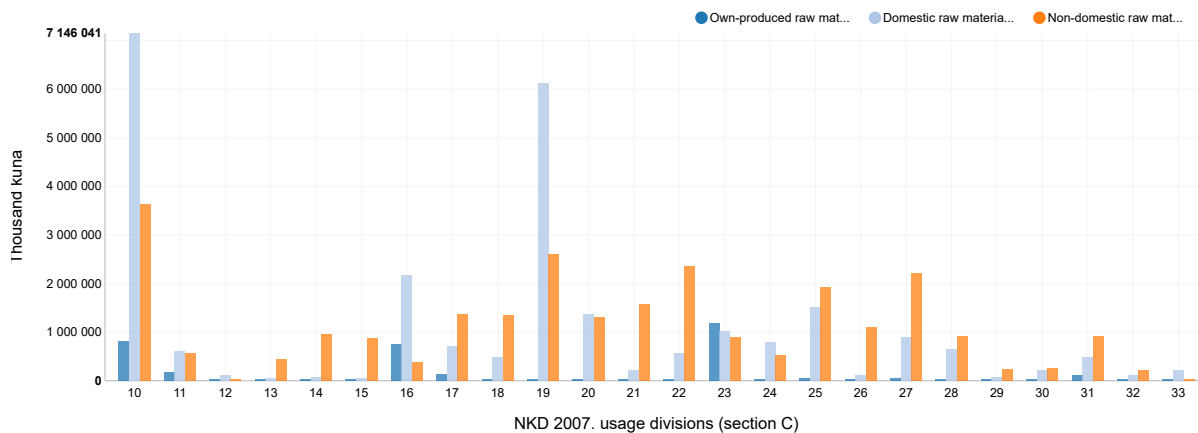


1 VALUE OF CONSUMED RAW MATERIALS AND CONSUMABLES FOR INDUSTRIAL PRODUCTION PURPOSES,
ACCORDING TO USAGE IN INDUSTRIAL NKD 2007. SECTIONS AND DIVISIONS, 2021

Thousand kuna

	Value of consumed raw materials and consumables, according to NRMI 2016.				
	Total	Own-produced raw materials	Purchased on markets from third parties		
			Total on market	On domestic markets	On non-domestic markets
Republic of Croatia	60 014 156	4 024 521	55 989 635	28 916 007	27 073 628
B Mining and quarrying	226 884	147 745	79 139	78 936	203
08 Other mining and quarrying	222 024	147 745	74 279	74 076	203
09 Mining support service activities	4 860	-	4 860	4 860	-
C Manufacturing	55 832 035	3 453 338	52 378 697	25 750 923	26 627 774
10 Manufacture of food products	11 594 474	809 257	10 785 217	7 146 041	3 639 176
11 Manufacture of beverages	1 365 442	185 093	1 180 349	605 522	574 827
12 Manufacture of tobacco products	123 309	-	123 309	120 605	2 704
13 Manufacture of textiles	508 811	20 205	488 606	43 768	444 838
14 Manufacture of wearing apparel	1 041 751	18 441	1 023 310	63 518	959 792
15 Manufacture of leather and related products	921 034	-	921 034	46 413	874 621
16 Manufacture of wood and of products of wood and cork, except furniture; manufacture of articles of straw and plaiting materials	3 277 299	741 548	2 535 751	2 161 628	374 123
17 Manufacture of paper and paper products	2 216 396	136 086	2 080 310	717 899	1 362 411
18 Printing and reproduction of recorded media	1 860 726	31 170	1 829 556	488 964	1 340 592
19 Manufacture of coke and refined petroleum products	8 729 872	-	8 729 872	6 124 305	2 605 567
20 Manufacture of chemicals and chemical products	2 722 361	36 006	2 686 355	1 373 942	1 312 413
21 Manufacture of basic pharmaceutical products and pharmaceutical preparations	1 790 769	-	1 790 769	222 926	1 567 843
22 Manufacture of rubber and plastic products	2 947 885	29 218	2 918 667	564 103	2 354 564
23 Manufacture of other non-metallic mineral products	3 099 800	1 184 747	1 915 053	1 015 964	899 089
24 Manufacture of basic metals	1 347 508	29 037	1 318 471	788 724	529 747
25 Manufacture of fabricated metal products, except machinery and equipment	3 479 661	43 417	3 436 244	1 522 091	1 914 153
26 Manufacture of computer, electronic and optical products	1 202 328	310	1 202 018	107 844	1 094 174
27 Manufacture of electrical equipment	3 167 229	61 299	3 105 930	884 726	2 221 204
28 Manufacture of machinery and equipment n. e. c.	1 565 728	-	1 565 728	652 659	913 069
29 Manufacture of motor vehicles, trailers and semi-trailers	306 240	1	306 239	66 039	240 200
30 Manufacture of other transport equipment	463 967	-	463 967	215 672	248 295
31 Manufacture of furniture	1 512 122	106 578	1 405 544	489 604	915 940
32 Other manufacturing	344 579	20 925	323 654	110 018	213 636
33 Repair and installation of machinery and equipment	242 744	-	242 744	217 948	24 796
D Electricity, gas, steam and air conditioning supply	3 946 837	423 438	3 523 399	3 078 714	444 685
35 Electricity, gas, steam and air conditioning supply	3 946 837	423 438	3 523 399	3 078 714	444 685
E Water supply; sewerage, waste management and remediation activities (division 36 only)	8 400	-	8 400	7 434	966
36 Water collection, treatment and supply	8 400	-	8 400	7 434	966

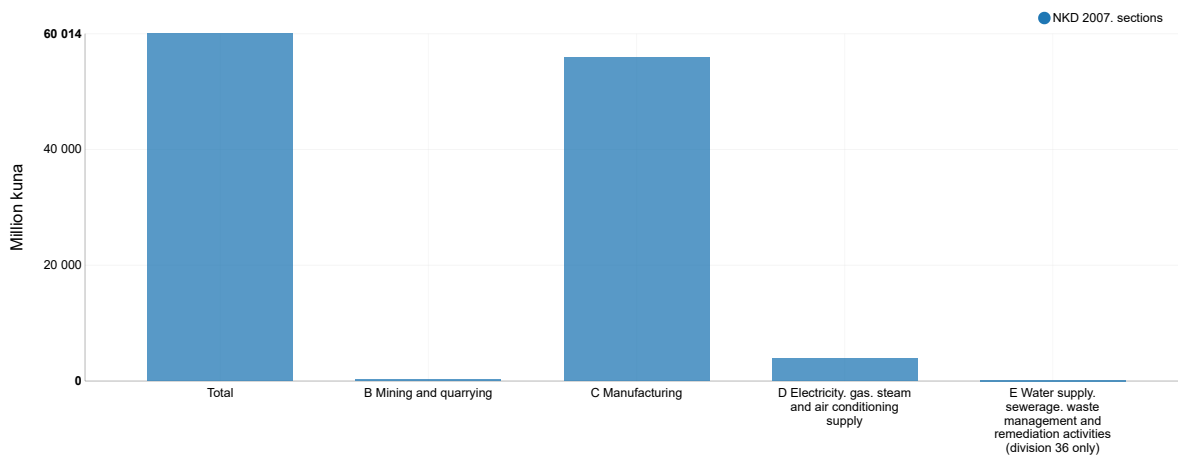
G-3 VALUE OF CONSUMED RAW MATERIALS AND CONSUMABLES, ACCORDING TO NKD 2007. USAGE DIVISIONS (C SECTION) AND BY ORIGIN, 2021



Section C Manufacturing

- 10 Manufacture of food products
- 11 Manufacture of beverages
- 12 Manufacture of tobacco products
- 13 Manufacture of textiles
- 14 Manufacture of wearing apparel
- 15 Manufacture of leather and related products
- 16 Manufacture of wood and of products of wood and cork, except furniture; manufacture of articles of straw and plaiting materials
- 17 Manufacture of paper and paper products
- 18 Printing and reproduction of recorded media
- 19 Manufacture of coke and refined petroleum products
- 20 Manufacture of chemicals and chemical products
- 21 Manufacture of basic pharmaceutical products and pharmaceutical preparations
- 22 Manufacture of rubber and plastic products
- 23 Manufacture of other non-metallic mineral products
- 24 Manufacture of basic metals
- 25 Manufacture of fabricated metal products, except machinery and equipment
- 26 Manufacture of computer, electronic and optical products
- 27 Manufacture of electrical equipment
- 28 Manufacture of machinery and equipment n. e. c.
- 29 Manufacture of motor vehicles, trailers and semi-trailers
- 30 Manufacture of other transport equipment
- 31 Manufacture of furniture
- 32 Other manufacturing
- 33 Repair and installation of machinery and equipment

G-4 VALUE OF CONSUMED RAW MATERIALS AND CONSUMABLES (INPUT) FOR INDUSTRIAL PRODUCTION PURPOSES, ACCORDING TO NKD 2007. SECTIONS, 2021

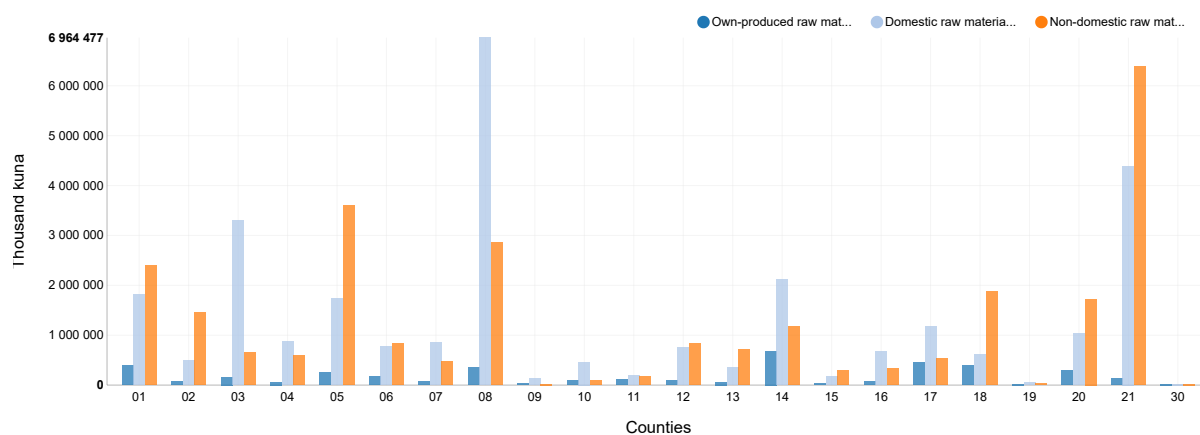


2 VALUE OF CONSUMED RAW MATERIALS AND CONSUMABLES FOR INDUSTRIAL PRODUCTION PURPOSES, ACCORDING TO USAGE IN INDUSTRIAL NKD 2007. SECTIONS AND DIVISIONS, BY COUNTIES, 2021

Thousand kuna

County of	Value of consumed raw materials and consumables, according to NRMI 2016.				
	Total	Own-produced raw materials	Purchased on markets from third parties		
			Total on market	On domestic markets	On non-domestic markets
Republic of Croatia	60 014 156	4 024 521	55 989 635	28 916 007	27 073 628
Zagreb	4 608 249	395 456	4 212 793	1 817 153	2 395 640
Krapina-Zagorje	2 017 332	74 028	1 943 304	492 074	1 451 230
Sisak-Moslavina	4 117 939	161 306	3 956 633	3 302 500	654 133
Karlovac	1 526 162	60 892	1 465 270	871 993	593 277
Varaždin	5 597 405	255 532	5 341 873	1 733 726	3 608 147
Koprivnica-Križevci	1 781 764	175 213	1 606 551	775 047	831 504
Bjelovar-Bilogora	1 391 072	69 666	1 321 406	855 709	465 697
Primorje-Gorski kotar	10 184 273	357 427	9 826 846	6 964 477	2 862 369
Lika-Senj	190 857	37 342	153 515	134 312	19 203
Virovitica-Podravina	642 375	85 383	556 992	463 564	93 428
Požega-Slavonia	482 955	116 287	366 668	189 821	176 847
Slavonski Brod-Posavina	1 696 108	98 662	1 597 446	755 743	841 703
Zadar	1 124 239	61 773	1 062 466	345 497	716 969
Osijek-Baranja	3 968 672	681 642	3 287 030	2 112 824	1 174 206
Šibenik-Knin	489 512	31 876	457 636	169 562	288 074
Vukovar-Sirmium	1 081 913	78 231	1 003 682	666 642	337 040
Split-Dalmatia	2 159 837	455 093	1 704 744	1 174 076	530 668
Istria	2 888 311	399 339	2 488 972	607 166	1 881 806
Dubrovnik-Neretva	79 261	5 147	74 114	50 187	23 927
Međimurje	3 055 294	290 629	2 764 665	1 039 536	1 725 129
City of Zagreb	10 914 605	133 597	10 781 008	4 391 519	6 389 489
Free zones	16 021	-	16 021	2 879	13 142

G-5 VALUE OF CONSUMED RAW MATERIALS AND CONSUMABLES, BY COUNTIES AND ORIGIN, 2021



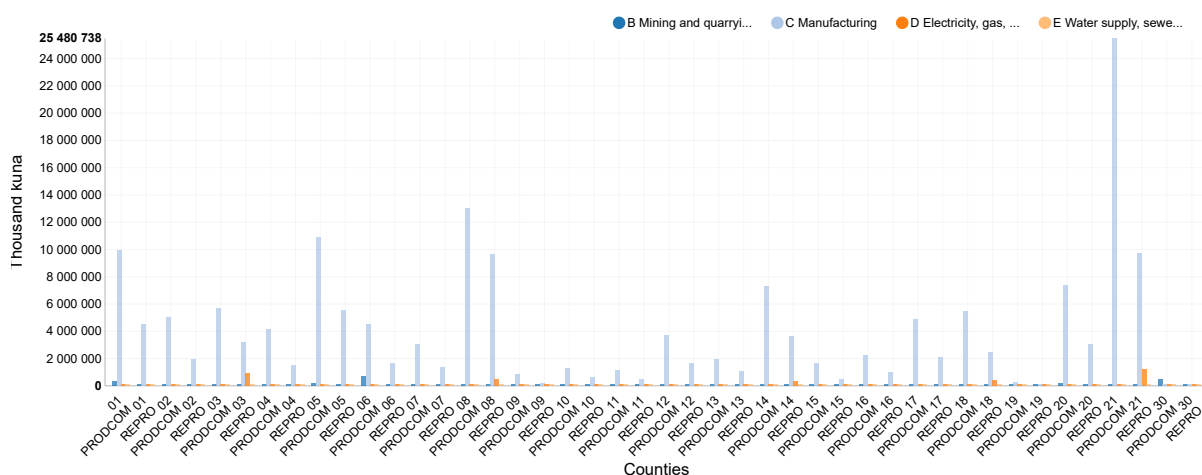
- | | | |
|------------------------------------|--------------------------------------|--------------------------------|
| 01 County of Zagreb | 09 County of Lika-Senj | 17 County of Split-Dalmatia |
| 02 County of Krapina-Zagorje | 10 County of Virovitica-Podravina | 18 County of Istria |
| 03 County of Sisak-Moslavina | 11 County of Požega-Slavonija | 19 County of Dubrovnik-Neretva |
| 04 County of Karlovac | 12 County of Slavonski Brod-Posavina | 20 County of Međimurje |
| 05 County of Varaždin | 13 County of Zadar | 21 City of Zagreb |
| 06 County of Koprivnica-Križevci | 14 County of Osijek-Baranja | 30 Free zones |
| 07 County of Bjelovar-Bilogora | 15 County of Šibenik-Knin | |
| 08 County of Primorje-Gorski kotar | 16 County of Vukovar-Sirmium | |

3 MOST IMPORTANT RAW MATERIALS CONSUMED FOR INDUSTRIAL PRODUCTION PURPOSES SELECTED BY VALUE, 2021

Thousand kuna

KPD 2015. codes	KPD 2015. headings	Total	Value of raw materials consumed, thousand kuna			
			Own-produced raw materials	Purchased from third parties		
				Total	On domestic markets	On non-domestic markets
061010	Petroleum oils and oils obtained from bituminous minerals, crude	6 147 687	-	6 147 687	5 859 912	287 775
062010	Natural gas, liquefied or in gaseous state	3 950 588	162 920	3 787 668	3 787 668	-
014120	Raw milk from dairy cattle	1 681 148	73 879	1 607 269	1 123 372	483 897
022012	Logs of non-coniferous wood, except tropical wood	1 492 153	-	1 492 153	1 487 272	4 881
201610	Polymers of ethylene, in primary forms	1 327 052	41 055	1 285 997	103 958	1 182 039
101112	Meat of swine, fresh or chilled	911 463	51 332	860 131	350 631	509 500
235111	Cement clinkers	902 487	836 632	65 855	55 114	10 741
244225	Aluminium foil, of a thickness <= 0,2 mm	865 352	-	865 352	347 034	518 318
383222	Secondary raw material of ferrous metals	733 989	29 037	704 952	669 201	35 751
139119	Other knitted or crocheted fabrics, including imitation fur by knitting	708 154	12 444	695 710	4 019	691 691
243411	Cold drawn wire of non alloy steel	699 726	-	699 726	104 468	595 258
205942	Anti-knock preparations; additives for mineral oils and similar products	671 241	-	671 241	21 290	649 951
151131	Leather, of bovine animals, without hair on, whole	657 712	-	657 712	4 380	653 332
241031	Flat rolled products of non alloy steel, not further worked than hot rolled, of a width of >= 600 mm	558 956	-	558 956	262 805	296 151
011112	Wheat, except durum wheat	539 130	749	538 381	524 300	14 081
161023	Wood, continuously shaped along any of its edges or faces (including strips and friezes for parquet flooring, not assembled, and beadings and mouldings), of other wood	486 423	352 953	133 470	60 499	72 971
222219	Other plastic packing goods	472 656	28 936	443 720	260 719	183 001
011120	Maize	443 843	83 604	360 239	357 957	2 282

G-6 COMPARISON OF TOTAL VALUE OF CONSUMED RAW MATERIALS AND CONSUMABLES (INPUT) WITH TOTAL VALUE OF INDUSTRIAL PRODUCTS SOLD (OUTPUT), ACCORDING TO NKD 2007. SECTIONS AND BY COUNTIES, 2021



01	County of Zagreb	09	County of Lika-Senj	17	County of Split-Dalmatia
02	County of Krapina-Zagorje	10	County of Virovitica-Podravina	18	County of Istria
03	County of Sisak-Moslavina	11	County of Požega-Slavonija	19	County of Dubrovnik-Neretva
04	County of Karlovac	12	County of Slavonski Brod-Posavina	20	County of Međimurje
05	County of Varaždin	13	County of Zadar	21	City of Zagreb
06	County of Koprivnica-Križevci	14	County of Osijek-Baranja	30	Free zones
07	County of Bjelovar-Bilogora	15	County of Šibenik-Knin		
08	County of Primorje-Gorski kotar	16	County of Vukovar-Sirmium		

NOTES ON METHODOLOGY

This First Release comprises first results of the Annual Survey on Raw Material and Energy Consumption in Industry (IND-21/REPRO form) for 2021 (hereinafter referred to as REPRO Survey for 2021). The results were aggregated from data collected at the level of the Nomenclature of Raw Materials and Consumables for Industry – NRMI 2016., which is an integral part of the Statistical Standards for the Annual Survey on Raw Materials and Energy Consumption in Industry (IND-21/REPRO form) for 2021 in the Republic of Croatia. The term "industry" in the entire First Release is defined by four NKD 2007. industrial sections, B, C, D and E (only division 36) (NN, No. 58/07). This definition of industry is harmonised with the definition used in all branch industrial surveys in the Croatian Bureau of Statistics as well as with the definition used for industry statistics in the European Union.

The legal basis of REPRO Survey

The Annual REPRO Survey for 2021 was carried out by the Croatian Bureau of Statistics on the basis of the Official Statistics Act (NN, No. 25/20) according to the above-mentioned Statistical Standards. The obligation to provide data is based on Article 45 of the Official Statistics Act.

REPRO indicators on consumption of raw materials for industrial production purposes (from PRODCOM)

First results refer to the most recent data on the industrial consumption statistics, which were derived from the annual results of the above-mentioned REPRO Survey for 2021. REPRO results provide detailed information primarily used in the compilation of use tables (inputs) by putting them in relation to PRODCOM results on industrial production sold (output) in order to enable the analysis of commodity flow taking into account the input-output concepts at the detailed level of raw materials/products (nomenclatures NRMI 2016./NIP 2021.).

All data presented here were calculated by aggregation of individual data on consumed raw materials and consumables classified in the NRMI 2016., which is an integral part of the mentioned Statistical Standards. However, the commentary on main results of REPRO Survey for 2021 (inputs) was shown in the comparison with results of the PRODCOM Survey for 2021 (outputs) in order to emphasise the main purpose and aim of this Survey and to provide a common framework with the PRODCOM Survey aimed at enabling the input-output analysis on harmonised basis (in the scope of national accounts).

Table 1. and graph 3. show the main results on the value of consumed raw materials and consumables for industrial production purposes by usage sections (the NKD 2007. industrial section and division level) for the Republic of Croatia in 2021. Concerning their origin, raw materials and consumables, including services, might be either purchased on markets (domestic or non-domestic) from third parties or own-produced intermediate products, but both were calculated in values of purchase prices. The regional review of aggregated data on the value of consumed raw materials and consumables, including services, for industrial production purposes, also expressed in purchase prices, was shown in table 2. and graph 6. at the county level.

Comparability of REPRO data

In the period from 2000 to 2003, the same kind of data were collected in natural figures through the Quarterly Survey on Raw Materials and Consumables and Final Energy Consumption in Industry (IND-1K form). Before that, they were collected through the joint Monthly Industrial Report (IND-1 form), both on the basis of the joint Methodology for Monthly Industrial Report on Industry (IND-1 form), a part of table 2.1, for both above mentioned surveys as well as on the basis of the first version of the Nomenclature of Reproduction Materials of Industry (NRMI 1997.), which was an integral part of the above mentioned Methodology. The new Statistical Standards for REPRO Survey are used for collection of data on annual basis, starting with 2004 as a reference year, on the basis of a revised version of the NRMI 2004. and NRMI 2008., which is used for the collection of all data on individual raw materials and consumables in industry. Since all three nomenclatures, NRMI 1997., NRMI 2004. and NRMI 2008., are based on the structure of the same reference classification, KPD 1995., KPD 2008.²⁾ and KPD 2015.²⁾ versions, correspondence tables were done in order to enable data comparability at a certain level, in natural figures (quantities), because earlier they were not collected in value terms.

Coverage and units of REPRO Survey

Reporting units in the REPRO Survey on the Consumption of Raw Materials and Consumables in Industry in 2021 are all trade companies, tradesmen and other legal entities and parts thereof employing 10 and more persons that consumed raw materials and consumables for industrial production purposes within the NKD 2007. industrial sections B, C, D and E (only division 36) in a reference annual period. Target statistical units are industrial enterprises and local units of industrial and non-industrial enterprises that consumed raw materials and consumables defined in the NRMI 2016. for industrial production purposes already recorded in the PRODCOM Survey for 2021, except statistical units or parts thereof that are "physically" situated outside the territory of the Republic of Croatia. In profiling of statistical units – industrial local units – the county principle was taken into account. In cases when the observed unit operates on the territory of several different counties, e.g. in five counties, it is further divided into five local units. The coverage of the REPRO Survey on Raw Materials and Consumables and Energy Consumption in Industry for 2021 (Inputs) is identical to the coverage of the PRODCOM Survey on Industrial Production for 2021 (Outputs) in order to analyse the commodity flow in a consistent and comparable way, taking into account the input-output concepts. For this reason, the coverage of reporting and statistical units is defined in the Address Book of Industrial Statistical Units, which was established by the Industry, Energy and Information Society Statistics Department, having the same scope, concept and criteria of coverage as the Address Book for the PRODCOM Survey.

Concepts and definitions of REPRO Survey

Concepts and definitions used in this REPRO Survey were taken over mostly from the ESA 2010³⁾ as well as from other EU or UN statistical terminology. They provide a further description of some of the terms used in the presentation of REPRO results, but they are not intended to provide definitive meanings of these words, for in other contexts they may have different meanings. They are intended for users of the REPRO results in order to prevent the misinterpretation of data.

Nomenclature NRMI 2016. – 2021.

The NRMI 2016. is an integral part of the above mentioned Statistical Standards for the REPRO Survey and it can be found in Annex 3. The hierarchically structured Nomenclature of Raw Materials and Consumables, including services, version 2016, was created for measuring the annual consumption of raw materials and consumables for industrial production purposes in volume and value terms. The NRMI 2016. version, was specially made to be used in monitoring the consumption in each of the NKD 2007. industrial activity group separately (05.1 to 36.0). Therefore, the first three digits indicate an industrial group of activity in which certain raw materials or consumables are usually used (including industrial services), while the following six digits in the code indicate individual raw materials or consumables classified in the NRMI 2016. and it is, in fact, a KPD 2015. item. Namely, the, NRMI 2016. version is based on the KPD 2015. version and harmonised up to the level of raw materials/products with the EU Combined Nomenclature 2021 (CN) as well as with the Customs Tariff of the Republic of Croatia for 2021⁴⁾ via correspondence tables. The NRMI 2016. code of raw materials and consumables comprises 10 digits, providing that, concerning individual raw material or consumable classified in the NRMI 2016., reporting units are obliged, while filling in the IND-21/REPRO form, to add the eleventh digit to this code, which indicates its origin (own-produced, domestic or non-domestic). The breakdown of raw materials and consumables classified in the NRMI 2016., which are consumed by industries for the industrial production purposes at the NKD 2007. activity group level, is defined with the KPD 2015. and mostly covers raw materials and consumables classified in the KPD 2015. production sections A to E (only division 36). In exceptional cases, the KPD 2015. items are further divided if particular raw materials and consumables seemed to be very important for a specific production, but were not recognisable at the sub-category level of the KPD 2015. products. The NRMI 2016. comprises about 7 800 codes of raw materials and consumables, together with assigned measurement units used in expressing data on the annual consumption of raw materials and consumables.

Raw materials and consumables

According to the concept of the REPRO Survey, the term "raw materials and consumables" is defined in a wider context and refers to all goods with physical dimension as well as to industrial services that can be found in the NRMI 2016. under a separate code, providing that they are used as inputs in the production process of reporting units, where they may either be transformed or used up in the production process. The NRMI 2016. comprises detailed raw materials and consumables, which includes energy for transformation purposes or non-energy consumption (excluding those used for final energy consumption in industry), spare parts, small tools, containers, tubes and tires for vehicles and other consumables to be consumed by each NKD 2007. industrial activity group (05.1 – 36.0).

Consumption of raw materials by industries

It covers the consumption of raw materials and consumables purchased and consumed by industrial statistical units in their production process in the industry sector. It also covers the consumption of own-produced raw materials and consumables (intermediate products of a reporting unit) as well as those purchased by industrial statistical units on domestic or non-domestic market (imports) and consumed in their production process in the same reference period. In the REPRO Survey, the consumption of each raw material and consumable classified in the NRMI 2016. is recorded in volume (using a defined measurement unit) and in values in thousands of kuna.

It has to be recorded in current purchase prices obtainable for the same kind of goods or services at the moment they are actually entering the production process, that is, when they are consumed, and not when they are purchased and put on stock (inventories). The consumption of raw materials and consumables is harmonised with the definition from the European System of National Accounts (ESA) 2010 in the part referring to the intermediate consumption⁵⁾. This definition excludes the consumption of fixed assets (buildings, machinery, equipment, land) which is recorded as the consumption of fixed capital.

Purchase prices

At the time of purchase, a purchase price is the price purchaser actually pays for products. It includes taxes and charges on products, but excluding VAT and other deductible taxes (e.g., excises) and subsidies. It also includes any transport charges paid separately by the purchaser at a place of delivery and excludes any discount for bulk or off-peak purchase as well as interest or services charges added under credit arrangements or any charge paid as a result of failing to pay within the stated period of time. In the REPRO Survey, the value of raw materials and consumables consumed by industries has to be recorded in current purchase prices obtainable for the same kind of goods or services at the moment when they actually enter the production process, that is, when they are consumed, and not when they were purchased and put on stock (inventories). It is in line with the ESA 2010 concept.

PRODCOM products

Product is an outcome of a certain economic activity. It is a generic term used for products that have a physical dimension as well as for industrial services. It is defined by the headings of the Nomenclature of Industrial Products – NIP and it is an integral part of the PRODCOM Survey on Industrial Production of the Republic of Croatia. That survey is connected to the production of industrial products defined by the NIP 2021, while for the future REPRO surveys, revised versions of NIP for every subsequent reporting year will be used. These versions will be available on the website of the Croatian Bureau of Statistics, besides their publication in Narodne novine (NN) at the beginning of each year.

The value of PRODCOM production sold

It is calculated on the basis of the selling price obtained/obtainable during the reporting period (invoiced values). The value of production includes packaging costs, even if they are charged separately, while the following costs are excluded: any turnover and consumer tax charged (VAT and excises), separately charged freight costs or any discount granted to customers. If finished products are hired out or leased to third parties, the price obtainable on the market for the product in question is recorded as an estimated value.

Input-output tables

Input-output tables are means of presenting a detailed analysis of the production process and the use of goods and services (products) and the income generated in that production. They can be either in the form of (a) supply and use tables or (b) symmetric input-output tables. The term is defined within the ESA 2010 concept.

Note to all users. Detailed tables of REPRO results for 2021 will be available in the Statistical Reports No. 1697: Inputs of Raw Materials in Industrial Production in 2021 – Detailed Annual Results. Data on final consumption of energy by industry according to energy types, which were collected through the REPRO Survey for 2021 for energy statistics purposes, will be an integral part of the Statistical Reports No. 1698: Energy Statistics, 2021.

1) NRM1 1997. can be found in the Annex of the Notes on Methodology in the Monthly Report on Industry (IND-1 form). Those Notes on Methodology were also used as a statistical standard of the Croatian Bureau of Statistics for the Quarterly Survey on Consumption of Raw Materials and Consumables and Final Consumption of Fuel in Industry (NN, No. 18/97).

2) KPD 2015. is an acronym for the Classification of Products by Activity of the Republic of Croatia (NN, No. 157/14).

3) The European System of Accounts 2010 (EU Regulation No 549/2013 of the European Parliament and of the Council of 21 May 2013) is harmonised with the SNA 2008 – the UN System of National Accounts (ISBN 978-92-1-161522-7). The acronym ESA 2010 is used throughout the text.

4) The Customs Tariff of the Republic of Croatia (NN, No. 124/15), the CT 2021 version, is harmonised with the CN 2021 EU version up to the eighth-digit figure

5) Harmonised with the definition of the intermediate consumption taken over from ESA 2010 (3.69). For the acronym "ESA 2010", see footnote 3.

Abbreviations

CN 2020	Combined Nomenclature, 2020 version
CT 2020	Customs Tariff, 2020 version
ESA 2010	European System of National Accounts, 2010 version
hl	hectolitre
KPD	Classification of Products by Activity
mm	millimetre
n. e. c.	not elsewhere classified
NIP 2020.	Nomenclature of Industrial Products, 2020 version
NKD 2007.	National Classification of Activities, 2007 version
NN	Narodne novine, official gazette of the Republic of Croatia
NRM1	Nomenclature of Selected Raw Materials in Industry
PRODCOM	PRODUCTION in the COMMUNITY
REPRO	Annual Survey on Raw Materials and Energy Consumption in Industry
UN	United Nations
VAT	value added tax
'000	thousand

Symbols

-	no occurrence
...	data not available
≥	more than or equal to
≤	less than or equal to

Published by the Croatian Bureau of Statistics, Zagreb, Ilica 3, P. O. B. 80.

Phone: (+385 1) 48 06 111

Press corner: press@dzs.hr

Persons responsible:

Milenka Primorac Čačić, Director of Business Statistics Directorate

Lidija Brković, Director General

Prepared by:

Ivana Zoroja Milić, Goran Dolšak and Luka Mihelj

USERS ARE KINDLY REQUESTED TO STATE THE SOURCE.

Customer Relations and Data Protection Department

Information and user requests

Phone: (+385 1) 48 06 138, 48 06 154

E-mail: stat.info@dzs.hr

Subscription

Phone: (+385 1) 48 06 115

E-mail: prodaja@dzs.hr