

## First Release

Year: LXI.

Zagreb, 21 August 2024

RAD-2024-1-2/1

ISSN 1334-0557



# AVERAGE MONTHLY NET AND GROSS EARNINGS OF PERSONS IN PAID EMPLOYMENT, BY ACCOUNTING PERIODS, 2024

The average monthly paid net earnings per person in paid employment in legal entities in the Republic of Croatia amounted to 1 297 euro for the first half-year of 2024 and to 1 173 euro for the second half-year of 2023, which means that the average monthly paid net earnings for the first half-year of 2024 showed a nominal increase of 10.6% and a real one of 9.9%.

The average monthly gross earnings per person in paid employment in legal entities in the Republic of Croatia amounted to 1 788 euro for the first half-year of 2024 and to 1 620 euro for the second half-year of 2023, which means that the average monthly gross earnings for the first half-year of 2024 showed a nominal increase by 10.4% and a real one of 9.7%.

The average monthly paid net earnings per person in paid employment in legal entities in the Republic of Croatia were 15.5% higher in nominal terms and 11.5% higher in real terms for the first half-year of 2024, as compared to the same period of the previous year.

The average monthly gross earnings per person in paid employment in legal entities in the Republic of Croatia were 15.6% higher in nominal terms and 11.6% higher in real terms for the first half-year of 2024, as compared to the same period of the previous year.

For the first quarter of 2024, the average monthly paid net earnings per person in paid employment in legal entities in the Republic of Croatia amounted to 1 271 euro.

For the first quarter of 2024, the average monthly gross earnings per person in paid employment in legal entities in the Republic of Croatia amounted to 1 747 euro.

For the second quarter of 2024, the average monthly paid net earnings per person in paid employment in legal entities in the Republic of Croatia amounted to 1 321 euro, which represented a nominal increase of 16.4% and a real one of 12.9% compared to the second quarter of 2023.

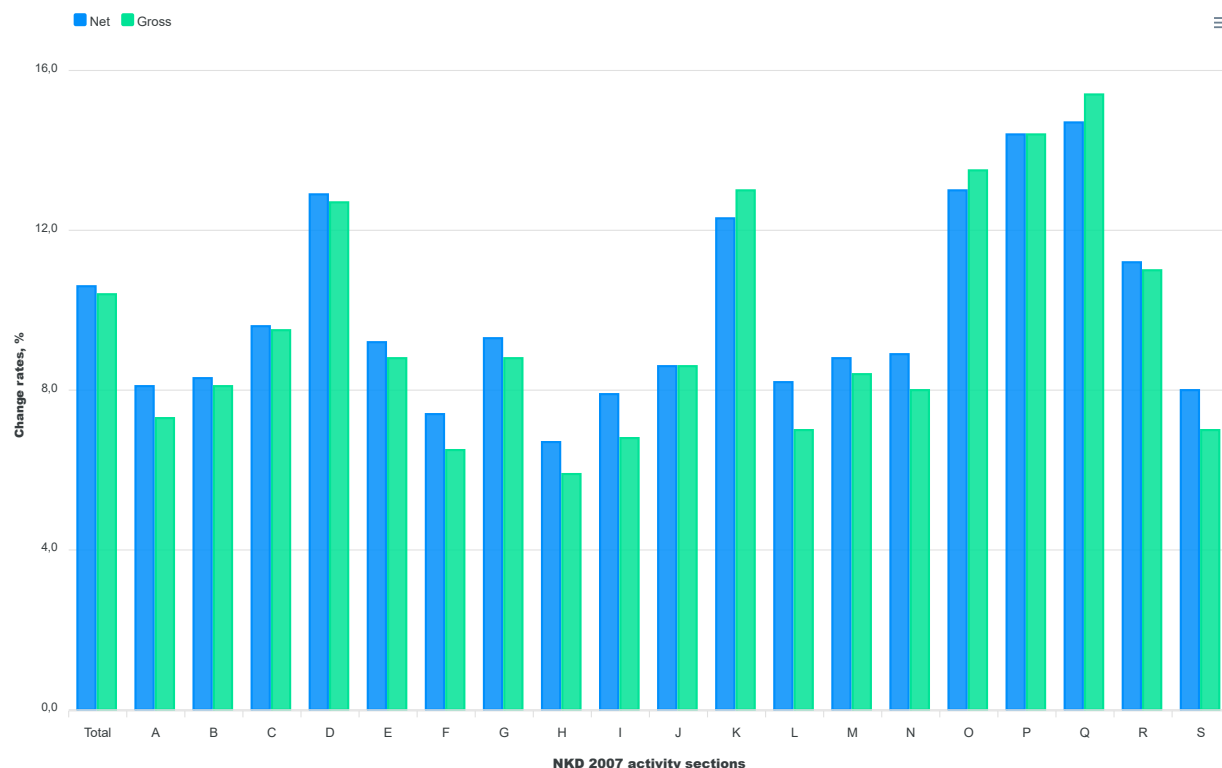
For the second quarter of 2024, the average monthly gross earnings per person in paid employment in legal entities in the Republic of Croatia amounted to 1 827 euro, which represented a nominal increase of 16.7% and a real one of 13.2% compared to the second quarter of 2023.

Detailed data can be downloaded on the link [Statistics in Line](#).

## 1 AVERAGE MONTHLY NET AND GROSS EARNINGS, QUARTERLY AND SEMI-ANNUAL DATA, 2024

	I – III 2024	IV – VI 2024	I – VI 2024	Indices		
				$\frac{\text{IV – VI 2024}}{\text{IV – VI 2023}}$	$\frac{\text{I – VI 2024}}{\text{I – VI 2023}}$	$\frac{\text{I – VI 2024}}{\text{VII – XII 2023}}$
<b>Net earnings</b>						
Average monthly paid net earnings per employee, euro	1 271	1 321	1 297	116,4	115,5	110,6
Real net earnings per employee				112,9	111,5	109,9
<b>Gross earnings</b>						
Average monthly gross earnings per employee, euro	1 747	1 827	1 788	116,7	115,6	110,4
Real gross earnings per employee				113,2	111,6	109,7

## G-1 CHANGE RATES OF AVERAGE MONTHLY NET AND GROSS EARNINGS, ACCORDING TO NKD 2007, FIRST HALF-YEAR OF 2024, VII – XII 2023 = 100



### NKD 2007 activity sections

- A Agriculture, forestry and fishing
- B Mining and quarrying
- C Manufacturing
- D Electricity, gas, steam and air conditioning supply
- E Water supply; sewerage, waste management and remediation activities
- F Construction
- G Wholesale and retail trade; repair of motor vehicles and motorcycles
- H Transportation and storage
- I Accommodation and food service activities
- J Information and communication
- K Financial and insurance activities
- L Real estate activities
- M Professional, scientific and technical activities
- N Administrative and support service activities
- O Public administration and defence; compulsory social security
- P Education
- Q Human health and social work activities
- R Arts, entertainment and recreation
- S Other service activities

## NOTES ON METHODOLOGY

### Data sources

Data on monthly net and gross earnings as well as data on paid hours were gathered by processing data from the Report on Income, Income Tax and Surtax as well as Contributions for Mandatory Insurances (JOPPD form), in effect since 1 January 2014.

All persons or entities that are the payers of income for which the income tax regulations prescribe the obligation of accounting and paying deduction tax are under the obligation to submit the JOPPD form.

### Coverage and comparability

Data comprise persons in employment in legal entities of all types of ownership, government bodies, and bodies of local and regional self-government units, on the territory of the Republic of Croatia.

Persons employed in crafts and trades and free lances and employed insured persons – private farmers are not covered, so data on their pays are not included in the data on average earnings.

Data on monthly net and gross earnings of persons employed in legal entities include net and gross earnings of persons in permanent employment, irrespective of the kind of employment and number of working-hours.

Persons in part-time employment who received earnings are expressed in full-time equivalent.

Data on monthly net and gross earnings are presented according to realised pay-offs in the current for the previous month, which is in line with the pay-off dynamics in most legal entities, so the average earnings refer to the month for which the pay-off has been received.

Data from January 2016 and onwards are not comparable to previously published monthly data.

#### Definitions

**Average monthly paid off net earnings** comprise income of a person in employment earned for work done during regular working hours as well as annual leave, paid leave, public holidays and day-offs as prescribed by law, sickness leave up to 42 days, absence for continuing professional education, during lay-off and job stop caused against person's will and of no fault of his own and net pays on the basis of compensations, allowances and rewards in sums which are subjects to contributions, taxes and surtaxes.

**Average monthly gross earnings** include all kinds of net pays on the basis of employment and the following mandatory allocations: pension insurance contributions, income tax and surtax on income tax.

**Average monthly net and gross earnings per person in employment** are calculated by dividing the total of pay-offs with the number of persons in employment expressed in full-time equivalent.

**Indices of nominal net and gross earnings** are calculated from the data on average monthly net and gross earnings for the respective months and years.

**Real indices** of net and gross earnings are calculated by dividing index of nominal net and gross earnings with a consumer price index for the respective months and years.

#### Abbreviations

NKD 2007 National Classification of Activities, 2007 version

**Published by the Croatian Bureau of Statistics, Zagreb, Ilica 3, P. O. B. 80**

Phone: (+385 1) 48 06 111

Press corner: [press@dzs.hr](mailto:press@dzs.hr)

Persons responsible:

Dubravka Rogić Hadžalić, Director of Demographic and Social Statistics Directorate

Lidija Brković, Director General

Prepared by:

Dean Maslovara and Borislav Maoduš

**USERS ARE KINDLY REQUESTED TO STATE THE SOURCE.**

Customer Relations and Data Protection Department

Information and user requests

Phone: (+385 1) 48 06 138, 48 06 154, 48 06 115

E-mail: [stat.info@dzs.hr](mailto:stat.info@dzs.hr)

Subscription

Phone: (+385 1) 21 00 455

E-mail: [prodaja@dzs.hr](mailto:prodaja@dzs.hr)